

FAO Rebecca Bamlett
Offshore Renewable Energy Projects
Consenting Leader
Marine Scotland Licensing Operations Team
Marine Laboratory
375 Victoria Road
Aberdeen
AB11 9DB

SSE Renewables
One Waterloo Street
Glasgow
G2 6AY

09 December 2022

Dear Ms Bamlett

Electricity Act 1989 (as amended)
The Electricity (Applications for Consent) Regulations 1990 (as amended)
The Electricity Works (Environmental Impact Assessment) (Scotland) Regulations 2017 (as amended)
Marine and Coastal Access Act 2009
Marine (Scotland) Act 2010
The Marine Works (Environmental Impact Assessment) Regulations 2007 (as amended)
The Marine Works (Environmental Impact Assessment) (Scotland) Regulations 2017

Application by Berwick Bank Wind Farm Limited (BBWFL) for Consent to Construct and Operate a Generating Station, Berwick Bank Wind Farm

Berwick Bank Wind Farm Limited (BBWFL) is a wholly owned subsidiary of SSE Renewables Limited. SSE Renewables is a leading developer, owner and operator of renewable energy across the UK and Ireland with a UK portfolio that includes the 3.6 GW Dogger Bank Wind farm in the North Sea and the 1.1 GW Seagreen Offshore Wind Farm in the Firth of Forth.

This application is being submitted by BBWFL for consent under Section 36 of the Electricity Act 1989 (Section 36 Consent) for the construction and operation of an offshore generating station (the Berwick Bank Wind Farm).

This letter also includes applications for the following Marine Licences under Part 4 of the Marine and Coastal Access Act 2009 and Part 4 of the Marine (Scotland) Act 2010:

- Marine Licence – Generating Station (wind turbines, foundations, inter array cables, associated scour and cable protection and all associated fixtures, fittings and protections).
- Marine Licence – Offshore Transmission Infrastructure (Part 1) (up to eight OSPs/Offshore converter station platforms, up to eight interconnector cables and up to eight export cables).
- Marine Licence - Offshore Transmission Infrastructure (Part 2) (up to two OSPs/Offshore converter station platforms and up to one interconnector cable).

Overview of the Proposed Development

The offshore components of the Berwick Bank Wind Farm (the Project) located seaward of Mean High Water Spring (MHWS) are referred to as the 'Proposed Development' and include the offshore wind farm (Generating Station) (the wind turbines, their foundations and associated inter-array cabling), together with associated transmission infrastructure including Offshore Substation Platforms (OSPs)/Offshore converter station platforms, their foundations, interconnector cables, offshore export cables and cable protection. The onshore components of the Project include landfall infrastructure (trenchless technology), onshore cables, onshore substation/converter station and connection (onshore cables) to the Scottish Power Energy Networks (SPEN) 400 kV Grid Substation located at Branxton, East Lothian. The onshore components are subject to a separate application for planning permission from East Lothian Council (ELC).

The Proposed Development array area covers an area of 1,010.2 km² in the outer Firth of Forth, approximately 47.6 km offshore of the East Lothian coastline and 37.8 km from the Scottish Borders coastline at St. Abbs. The Proposed Development array area is already the subject of Agreement for Lease (AfL) from Crown Estate Scotland (CES). The Proposed Development export cable corridor up to MHWS covers an area of 167.9 km². This is where the offshore export cables and associated cable protection will be located.

The generating station will comprise up to 307 wind turbines which will be installed in the Proposed Development array area, with either suction caisson jacket or piled jacket foundations, inter array cabling, scour and cable protection.

There will also be up to ten OSPs/Offshore converter station platforms within the Proposed Development array area which will also be installed on piled jacket or suction caisson jacket foundations. These OSPs/Offshore converter station platforms will be connected via interconnector cables. Up to eight offshore export cables will then connect the OSPs/Offshore converter station platforms to the landfall on the East Lothian coast, at Skateraw Harbour (hereafter referred to as the 'Skateraw Landfall').

BBWFL is also developing an additional export cable and grid connection to Blyth, Northumberland (hereafter the "Cambois connection"). This additional grid connection was agreed between the Project and the National Grid Energy Systems Operator (NGESO) in June 2022 and will enable the Project to reach full generating capacity (4.1 GW) by the early 2030's.

Applications for the necessary consents (including marine licences) to support the Cambois connection are being applied for separately once further development work has been undertaken on this offshore export corridor. An EIA will be prepared to support any relevant consent applications that are required to deliver the Cambois Connection which will also consider cumulative effects with the Proposed Development. The Cambois Connection has also been considered cumulatively as part of this Application.

In order to allow the Project to deal with the OSP/offshore converter stations for the Cambois connection separately, along with the marine licences for that connection, the OSPs/Offshore converter station platforms have been split across two Marine Licences (Offshore Transmission Infrastructure Part 1 and Offshore Transmission Infrastructure Part 2). A description of the works relating to these two Marine Licences (Offshore Transmission Infrastructure Part 1 and Offshore Transmission Infrastructure Part 2) is provided below.

Description of the Works – Generating Station

The Berwick Bank generating station will comprise of the following key offshore components:

- Up to 307 wind turbines (each comprising a tower section, nacelle and three rotor blades).
- Maximum parameters of the largest wind turbines:
 - Maximum rotor blade tip height of 355 m (measured from Lowest Astronomical Tide (LAT))
 - Maximum rotor blade diameter of 310 m
 - Minimum rotor blade tip to sea clearance of 37 m (measured from LAT)
 - Maximum hub height of 200 m (measured from LAT)
 - Minimum wind turbine spacing of 1,000 m
 - Maximum wind turbine spacing of 4,650 m
- Wind turbine foundations including steel lattice jacket towers with pin piles or suction caissons.
- Up to 1,225 km of inter array cabling
- Scour protection and inter array cable protection

Description of the works – offshore transmission infrastructure (Part 1)

The Berwick Bank offshore transmission infrastructure Part 1 will comprise of the following key offshore components:

- Up to eight OSP/offshore convertor station topsides
- Up to seven interconnector cables with total length up to 85 km.
- Up to eight export cables with total maximum length of up to 872 km.
- Scour protection and cable protection

Description of the works – offshore transmission infrastructure (Part 2)

The Berwick Bank offshore transmission infrastructure Part 2 will comprise of the following key offshore components:

- Up to two OSP/offshore convertor station topsides (housing electrical infrastructure).
- One interconnector cable with total length up to 30 km.

Compliance with the Environmental Impact Assessment (EIA) and Habitats Regulations

An Environmental Impact Assessment (EIA) has been completed for the Proposed Development in accordance with The Electricity Works (Environmental Impact Assessment) (Scotland) Regulations 2017 (as amended), The Marine Works (Environmental Impact Assessment) Regulations 2017 (as amended) and The Marine Works (Environmental Impact Assessment) Regulations 2007 (as amended). The EIA Report (Volumes 1 to 4) has been submitted as part of this consent application.

A Habitats Regulations Appraisal (HRA) has also been completed as required under the Conservation (Natural Habitats, & c.) Regulations 1994, The Conservation of Habitats and

Species Regulations 2017 and the Conservation of Offshore Marine Habitats and Species Regulations 2017 (collectively referred to as the “Habitats Regulations”). In accordance with these Regulations a Report to Inform an Appropriate Assessment (RIAA) (Parts 1 to 3) has been completed based on the outcome from the HRA Screening (assessment of likely significant effects (LSE)).

Derogation case

Under the Habitats Regulations, where the risk of adverse effects on the integrity (AEOI) of a protected site cannot be excluded, decision-makers may grant consent for a plan or project that must be carried out for imperative reasons of overriding public interest (IROPI) where there are no alternative solutions and subject to compensatory measures to ensure that the overall coherence of the national site network is maintained. These three tests (no alternative solutions, IROPI and compensatory measures) form the “Derogation Case” on which the decision-maker should be satisfied before granting consent for a plan or project.

Conclusions reached in the RIAA have identified the potential for AEOI on eight European sites (Special Protection Areas (SPAs)) supporting populations of kittiwake and one or more of the following species: guillemot, razorbill and puffin. In view of these conclusions, it is necessary to provide the requisite information and justification (the Derogation Case) to satisfy the HRA Derogation Provisions in respect of the species for the SPAs identified. The documents comprising the Derogation Case are included as part of this application. The Derogation Case made as part of the Application provides robust and sufficient information to allow the Scottish Ministers to grant the applications for the Project in compliance with the Habitats Regulations.

It is also noted that in circumstances where AEOI are identified for a European site outside Scotland or the Scottish offshore region, the Scottish Ministers must notify the Secretary of State (SofS) and can only agree to the project after having been notified of the SofS’s agreement. As such, the enclosed documents provide a comprehensive Derogation Case that can be relied upon by the Scottish Ministers and SofS to the extent required.

Documentation Enclosed

The documents submitted as part of the Berwick Bank Wind Farm Section 36 Consent application and associated Marine Licence applications include:

- This cover letter to the Section 36 Consent Application
- Three Marine Licence application forms and supporting information for the following:
 - Generating station in the Proposed Development array area (beyond 12 nm) under the Marine and Coastal Access Act 2009;
 - Offshore Transmission Infrastructure Part 1 (under both the Marine and Coastal Access Act 2009 and the Marine (Scotland) Act 2010) for up to eight OSPs/offshore converter station platforms and interconnector cables located in the Proposed Development array area and up to eight export cables; and
 - Offshore Transmission Infrastructure Part 2 under the Marine and Coastal Access Act 2009 for two OSPs/offshore converter station platforms and interconnector cables located in the Proposed Development array area.
- Environmental Impact Assessment (EIA) Report:
 - Non-Technical Summary
 - Volume 1 – Introductory Chapters
 - Volume 2 – Specialist Assessment Chapters

- Volume 3 – Technical Appendices and Annexes including a Navigational Risk Assessment (NRA) and Audit Document
- Volume 4 – Outline Management Plans
- Report to Inform an Appropriate Assessment (RIAA):
 - Executive Summary
 - Part One – Introduction
 - Part Two – Special Area of Conservation (SAC) Assessments
 - Part Three – Special Protection Area (SPA) Assessments
 - Appendices including Habitat Regulations Appraisal (HRA) Screening Report
- Derogation Case Documents:
 - Statement of Need
 - Derogation Case
 - Colony Compensatory Measures Evidence Report
 - Fisheries Compensatory Measures Evidence Report
 - Implementation and Monitoring Plan
 - Derogation Case – Environmental Impact Assessment (EIA) Report
 - Derogation Case – Report to Inform an Appropriate Assessment (RIAA)
- Consent Application Accompanying Documents:
 - MPA Assessment
 - Marine Archaeology Technical Report
 - Offshore Planning Statement
 - Onshore and Offshore Pre-Application Consultation (PAC) Report

Onshore Applications

The Berwick Bank onshore transmission infrastructure associated with the Berwick Bank Wind Farm is the subject of a separate application for planning permission under the Town and Country Planning (Scotland) Act 1997.

Public Notices / Advertisements

Public notices advising that BBWFL has submitted applications for a Section 36 Consent and accompanying Marine Licences to Marine Scotland and inviting the public to submit comments on the application will be placed in the following publications on dates to be agreed with Marine Scotland's Licensing Operations Team:

- East Lothian Courier
- The Herald
- The Courier
- Edinburgh Gazette
- Fishing News
- Lloyds list

The adverts will advise the public how to participate in the consultation on the application, in accordance with The Marine Works (Environmental Impact Assessment) Regulations 2007 (as amended), The Marine Works (Environmental Impact Assessment) (Scotland) Regulations 2017, the Electricity Works (Environmental Impact Assessment) (Scotland) Regulations 2017 and the Electricity (Applications for Consent) Regulations 1990.

Hard copies of the application documents will be made available for the public to view in the following locations:

Location	Address	Opening Hours
East Lothian Council Headquarters	John Muir House Brewery Park Haddington EH41 3HA	Open Monday to Thursday 9am - 5pm Friday 9am - 4pm
Dundee City Council	Dundee House 50 North Lindsay Street Dundee DD1 1QE	Open Monday, Tuesday, Thursday and Friday 8.30am - 5pm Wednesday 9.30am - 5pm
Scottish Borders Council Council Headquarters	Newtown St. Boswells Melrose TD6 0SA	Monday to Thursday: 8am- 5pm Friday 8am - 4pm Saturday 9am - 12noon
Angus Council	Orchardbank Business Park Orchardbank Forfar Angus DD8 1AN	Monday to Friday: 8am-5pm
Fife Council	Methil Customer Service Centre and Library Wellesley Road, Methil, Fife KY8 3PA	Monday, Tuesday, Thursday & Friday 9-12 and 1-5. Wednesday 10-12 and 1-5.

In addition to the hard copies available to view at the locations above, an electronic copy of the application will also be made available at the following location:

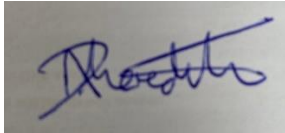
Location	Address	Opening Hours
Dunbar Library	Bleachingfield Community Centre Dunbar EH42 1DX	Monday, Tuesday and Friday 9 am to 1 pm, 2 pm to 5 pm Wednesday 10 am to 1 pm, 2 pm to 5 pm Thursday 9 am to 1 pm, 2 pm to 7 pm

Once the application has been accepted by Marine Scotland Licencing Operations Team, the application documents will be published online at: <https://www.berwickbank.com>

Hard copies can also be made available on request. These will be subject to a charge of £350. Requests for hard copies of the application documents can be made at: berwickbank@sse.com

We look forward to hearing from you in relation to the formal acceptance of the applications.

Yours faithfully,



Alex Meredith
Project Director

Marine Renewable Energy Projects in the Territorial Sea and UK Controlled Waters Adjacent to Scotland

Marine (Scotland) Act 2010

IMPORTANT: Before completing this form, please read these notes carefully.

The following numbered paragraphs correspond to the questions on the application form and are intended to assist applicants in completing the form. These explanatory notes are specific to this application and so applicants are advised to read these in conjunction with the General Guidance document. If further clarification is needed please contact Marine Scotland Licensing Operations Team (MS-LOT) on 01224 295579 or email:

MS.MarineLicensing@scotland.gsi.gov.uk

Please refer to the General Guidance for information regarding payment methods.

Explanatory Notes

2. Applicant

The person, company or organisation making the application that will be named as the licensee on any licence issued.

3. Agent

Any person, company or organisation acting under contract (or other agreement) on behalf of any party listed in the answer to question 2, and having responsibility for the control, management or physical deposit of materials anywhere below the tidal limit of the mean high water springs (MHWS) (e.g. a consultancy company submitting the application or a contractor who will be carrying out the works.)

4. Duration of Project

Provide details of the proposed commencement and completion dates of the project. The start date will not normally be backdated, except in exceptional circumstances, since to commence a project for which a licence has not been obtained may constitute an offence resulting in appropriate legal action. A licence is normally valid for 1 calendar year or the duration of the project (whichever is longer). After this period, it may be necessary for licence holders to re-apply for a further licence to continue any ongoing work (i.e. the project will be reviewed to establish whether original details are being adhered to). Although Marine Scotland Licensing Operations Team (MS-LOT) will aim to write to licence holders one month before the expiry date of a licence, it is the licensee's responsibility to apply for any further licences or an extension prior to the expiry of the initial licence.

5. Description and Cost of the Proposed Project

- (a) This estimate should only cover work taking place below the tidal level of MHWS and should take into consideration the cost of materials, labour fees etc.
- (b) Where the project is expected to take longer than 12 consecutive months, this description must detail which elements are to be undertaken in the first 12 months, with an outline of the schedule for each further 12 month period (the method of work should be described in the answer to question 7). In the event that MS-LOT must undertake a wider consultation on your application this description may be used as a basis for informing other bodies as to the nature of the proposed work.
- (c) Best describe the type of work proposed. Where the project involves a number of elements, please complete all appropriate boxes.

6. Location of Project

Include a list of the National Grid References (NGR) or latitude and longitude co-ordinates of the boundary points of the proposed project. In some cases, (e.g. the laying of cables) it may only be practicable to supply NGR or latitude and longitude co-ordinates for the start and end points.

NGR: Should consist of two letters followed by 10 digits (e.g. TL6320031700) where the first 5 digits are the eastings (read from the south west corner of an Ordnance Survey map) and the last 5 digits are northings.

Latitude & longitude: For positions read from charts of 1:25,000 scale or smaller, the format should be, e.g. 55°55.55'N 2°22.22'W. The decimal point specifies that decimals of minutes are used and the datum is stated explicitly. If seconds are used then the datum should be explicitly marked, e.g. 55°55'44"N 2°22'11"W. For positions read from larger scale charts, e.g. 1:10,000, three decimal places of minutes should be used, e.g. 55°55.444'N 2°22.222'W.

It is important that the correct positions are included with this application, as any errors may result in the application being refused or delayed.

To supplement the information given in section 6, the following must be provided with the completed application form:

- a suitably scaled extract of an Ordnance Survey Map (1:2,500 scale but not more than 1:10,000) or Admiralty Chart which should be marked to indicate:
 - the full extent of the project in relation to the surrounding area;
 - either NGR or latitude and longitude co-ordinates defining the area of operation.
 - the level of MHWS;
 - any adjacent Special Area of Conservation (SAC), Special Protection Area (SPA), Site of Special Scientific Interest (SSSI), Ramsar or similar conservation area boundary.

These drawings/plans may be copied to others as part of the MS-LOT consultation process. If they are subject to copyright, **it is the responsibility of the applicant to obtain necessary approvals to reproduce the documents and to submit suitably annotated copies with the application.**

7. Method Statement

Please provide a full method statement, including details of any temporary structures/deposits that may be required below MHWS during the project, the ultimate fate of the structure and material used in its construction. Details of temporary structures will be included in any licence issued.

Proposed measures to ensure the marine environment is adequately safeguarded during the project should also be described, as should those taken to minimise any interference with other uses of the sea or foreshore.

8. Permanent (and Temporary) Deposits

- (a) Complete the appropriate box(es) to indicate all materials to be deposited below MHWS. If you propose using types of materials for which a specific box is not provided, please describe the nature of such material in the box marked "Other".
- (b) If any materials to be placed below MHWS are to be brought to the site by sea, give details of the material (e.g. clean rock, average particle size) the vessels to be used,

A chart should also be provided showing the proposed vessel route to the project site and details of any transshipment areas (i.e. where material may be off-loaded to smaller vessels/barges for transport inshore).

If temporary deposits are required, please provide details as with the permanent deposits above. The temporary deposit location details (NGR or Lat/Long) should be added to section 6 of the form, and the period of time the site will be used must be provided. If issuing a licence, MS-LOT will include on the document details of any area that has been approved as a temporary deposit site

9. Producer/Contractor

The person, company or organisation whose activities produce the material intended for deposit in the sea (e.g. the dredging or excavation contractor).

10. Holder

The person, company or organisation that will be in possession of the waste prior to its deposit in the sea. This will include those providing temporary storage facilities or transporting the material to the vessel for conveyance to the sea disposal site etc.

11. Agent

Any person, company or organisation acting under contract (or other agreement) on behalf of any party listed in the answer to sections 1, 9 or 10 and having responsibility for the control, management or deposit anywhere below the tidal limit of MHW (e.g. a consultancy company submitting the application or a contractor who will be carrying out the operations).

12. Duration of Dredging/Drilling Operation

Provide details of the proposed commencement and completion dates of the operations. The start date will not normally be backdated, except in exceptional circumstances, since to commence a project for which a licence has not been obtained may constitute an offence resulting in appropriate legal action. A licence may be issued for up to 3 calendar years, although MS-LOT will aim to write to licence holders two months before the expiry date of a licence, it is the licensee's responsibility to apply for any further licences or an extension prior to the expiry of the initial licence.

13. Details of Dredging/Drilling and Disposal Vessel(s)

The name, operator and type of vessel, including the type of dredging/drilling plant (e.g. cutter-suction) should be entered. If vessel details are not available at the time of application, please indicate this on the form as these details will be required prior to licence issue.

14. Method Statement of Dredging/Drilling Operation

Provide a full method statement of the dredging/drilling operation. This should include details such as the rate of dredging/drilling, timing of the operation, order of the areas to be dredged/drilled and the precautions taken to protect both navigation and the environment.

15. Use of Explosives

Indicate whether explosives are to be used as part of the dredging operations. If yes, please indicate if a method statement has been provided with your application. If a method statement has been produced but is not available, please provide an explanation in the space provided.

16. Details of Areas to be Dredged/Drilled

This section requires data to be provided about the source area to be dredged and the type of material to be deposited.

Name of Area - An annotated chart/location plan (either at A3 or A4 format) of suitable scale (1:2,500 but no more than 1:10,000) should be provided, with each proposed dredge area marked and named. The chart/location plan should show the full extent of the project in relation to the surrounding area. These drawings/plans may be copied to others as part of MS-LOT consultation procedures. If they are subject to copyright, **it is the responsibility of the applicant to obtain necessary approvals to reproduce the documents and to submit suitably annotated copies with the application.**

Co-ordinates - Include a list of the National Grid References (NGR) or latitude and longitude co-ordinates of the boundary points for the proposed dredge areas.

- **NGR:** Should consist of two letters followed by 10 digits (e.g. TL6320031700) where the first 5 digits are the eastings (read from the south west corner of an Ordnance Survey map) and the last 5 digits are northings.
- **Latitude & longitude:** For positions read from charts of 1:25,000 scale or smaller, the format should be, e.g. 55°55.55'N 2°22.22'W. The decimal point specifies that decimals of minutes are used and the datum is stated explicitly. If seconds are used then the datum should be explicitly marked, e.g. 55°55'44"N 2°22'11"W. For positions read from larger scale charts, e.g. 1:10,000, three decimal

places of minutes should be used, e.g. 55°55.444'N 2°22.222'W.

Nature of Dredge/Drill Area - provide a description of the type of area to be dredged/drilled (e.g. river bed, sea, harbour, approach channel, estuary)

17. Details of Material to be Dredged/Drilled

Information is required for each of the areas listed in the answer to section 16. The applicant should indicate the following:

A pre-dredge survey and sediment chemical analysis report will be required by MS-LOT prior to the issue of a sea disposal licence. Please contact MS-LOT for details in relation to specific projects. In addition to those samples analysed by the applicant, sediment sub-samples must be submitted to MS-LOT as check monitoring may be required.

Physical Composition of Material - indicate the approximate proportions (by volume) of the different types of dredged materials which are expected to be removed from each area.

For the purposes of this application the following descriptions should be used:

Average particle size (Based on the Wentworth Table)		
Description	Lower range	Upper range
Boulders	256 mm+	
Cobbles	64 mm	256 mm
Pebbles	4mm	64 mm
Granules	2 mm	4mm
Sand	62 microns	2mm
Silt and clay		62 microns

Depth of Material to be Removed - indicate the maximum depth (in metres) below the current seabed level, to which it is expected dredging is to be carried out.

Estimated Specific Gravity - indicate the specific gravity of the material to be disposed.

Quantity to be Dredged/Drilled per Year - the amount of material to be dredged (per year) from each area. Indicate unit of measure, either in-situ cubic metres or metric tonnes.

18. Dredged/Drilled Material: Additional Information

Contamination - information should be given regarding contamination in any of the areas to be dredged/drilled e.g. waste discharges, man-made rubbish or industrial activity in close proximity.

Type of dredger - indicate the type of dredging plant to be used within each area.

Beneficial uses – include any intended beneficial use of material (details to be provided in the BPEO).

19. Details of Dredged/Drilled Material Quality

The applicant is required to have representative sediment samples analysed at a laboratory of choice. This is liable to extend the time required to consider your application **as no licence will be issued without provision of this chemistry data**. As part of the application consideration process, an assessment will be made of the

chemical and physical characteristics of the material to be deposited at sea and its potential effects upon the marine environment.

As part of the licence conditions, you may be required to take representative samples of the dredged/drilled material during the dredging/sea disposal operations for analysis by MS-LOT. In such cases, samples should be taken at specified locations and depths and placed in containers which will be provided. The samples should then be returned to MS-LOT at the Marine Laboratory Aberdeen. This process enables the UK to fulfil its obligations under international conventions.

20. Best Practicable Environmental Option (BPEO) Assessment

Under Part 4, Section 27(2) of the Marine (Scotland) Act 2010 (there is no equivalent provision under the Marine and Coastal Access Act 2009), the Licensing Authority has an obligation to consider the availability of practical alternatives when considering applications involving disposal of material at sea. In order for Marine Scotland to thoroughly assess the available alternative options and reach a properly considered decision, all sea disposal licence applications must be supported by a detailed assessment of the alternative options - a Best Practicable Environmental Option (BPEO) assessment. This should include a statement setting out the reasons which have led to the conclusion that deposit of the materials at sea is the BPEO. **Sea disposal applications will not be considered unless they are accompanied by a BPEO assessment.** All options in the BPEO should be explored fully (as per the guidance documents) otherwise your form and BPEO are liable to be returned to you thereby delaying processing of the application.

21. Sea Disposal Site Details

Provide details of the proposed sea disposal site for the dredged material and, if necessary, any alternative sea disposal site(s) considered. In determining whether to issue a licence, MS-LOT will take into account any site nominated by the applicant. However, should this site be unsuitable, the nearest suitable disposal site for the dredged material will be identified. Should you wish to establish a new site, please provide details in a covering letter with your application and MS-LOT will contact you to discuss your proposal before your application is determined. The cost of any site investigations to identify any new sea disposal site will normally be the responsibility of the applicant.

22. Other Consents

Detail all consents required for the proposed project and indicate those that you have applied for or received. In all cases the applicant must provide the name and address of the nearest Local Planning Authority for the location of the project.

23. Statutory Consenting Powers

Please describe in the answer to this question what (if any) statutory responsibilities you (or your client) have to consent any aspect of the project.

24. Advertising and Consultation

- (a) Confirm whether the proposed project has been advertised, and if so how and where?
- (b) Have the public been invited to comment on the proposed project? If so to whom and what was the closing date?
- (c) Have any consultation meetings been held with the public? If so where and when?

25. Consultation with Conservation Bodies

Consenting Authorities have a duty to ensure marine projects will not have a significant adverse environmental impact, particularly upon designated conservation areas (e.g. SSSI, SAC, SPA, Ramsar sites etc). All details of

consultations with conservation bodies (e.g. SNH, JNCC) should be given, particularly where the applicant has statutory powers for consenting aspects of the project

In addition, guidance can be obtained from www.foodstandards.gov.uk/ with regards to the Shellfish Waters Directive (2006/113/EC) which has parameters set to protect the water quality in which edible shellfish are grown.

26. Designated Conservation Areas

Indicate whether the proposed project is located within or close to the boundaries of a conservation area such as a SAC, SPA, SSSI or Ramsar site (further information can be found on the SNH SiteLink webpage <http://gateway.snh.gov.uk/>).

27. Environmental Assessment

Under the Marine Works (EIA) Regulations 2007, there may be a requirement for certain projects to undergo an Environmental Impact Assessment (EIA) and produce an Environmental Statement (ES). If an EIA/ES is deemed necessary, MS-LOT cannot issue a marine Licence until the outcome of the EIA/ES has been determined. Please indicate whether any EIA has been carried out in respect of the proposed project, either under your own powers or as required by another authority. If such an assessment has been undertaken, please indicate if a copy has been provided with your application. If the statement/assessment has been completed but is not available, please provide an explanation in the space provided.

Additionally, please also give details regarding if and where a copy has been/is being made available for public inspection.

Other Considerations

Applicants should also be aware of the need to pay due regard to coastal and marine archaeological matters and attention is drawn to Historic Scotland's Operational Policy Paper HP6, "Conserving the Underwater Heritage". Please ensure that you have:

- completed **all** applicable sections of the application form;
- signed and dated the declaration;
- provided the correct relevant documents, charts, and continuation sheets (where necessary); and
- enclosed the correct payment (together with the remittance slip) or paid by means of BACS (if appropriate).

Otherwise your application may be delayed or returned to you.

Application for Marine Renewable Energy Projects in the Territorial Sea and UK Controlled Waters Adjacent to Scotland

(ML-003)

Marine (Scotland) Act 2010

It is the responsibility of the applicant to obtain any other consents or authorisations that may be required.

Under Part 4, Section 54 of the Marine (Scotland) Act 2010 and Section 101 of the Marine and Coastal Access Act 2009 all information contained within or provided in support of this application will be placed on the Public Register. There is no national security grounds for application information not going on the Register under the 2010 Act. Under the 2009 Act, application information goes on the Register unless the Secretary of State determines that it's disclosure in the Register would be contrary to the interests of national security.

Public Register

Is there any information contained within or provided in support of this application that you consider should not be included on the Public Register on the grounds that its disclosure

- (a) would be contrary to the interests of national security; or YES NO
- (b) would adversely affect the confidentiality of commercial or industrial information where such confidentiality is provided by law to protect a legitimate commercial interest? YES NO

If **YES**, to either (a) or (b), please provide full justification as to why all or part of the information you have provided should be withheld.

1. Project Title and Payment Details

Please give a brief identifiable description, including the location, of the project.

Berwick Bank Wind Farm Generating Station located within the Outer Firth of Forth.

Payment: Enclosed payment BACS **OR** Invoice

2. Applicant Details

Title Initials Surname

Trading Title (if appropriate) Berwick Bank Wind Farm Limited

Address Inveralmond House, 200 Dunkeld Road, Perth, PH1 3AQ

Name of contact (if different) Sarah Edwards

Position within Company (if appropriate)

Telephone No. 07587 201201 (inc. dialing code)

Fax No. (inc. dialing code)

Company Registration No. SC721781

Email sarah.edwards2@sse.com

3. Agent Details (if any)

Title Initials Surname

Trading Title (if appropriate)

Address

Name of contact (if different)

Position within Company (if appropriate)

Telephone No. (inc. dialing code)

Fax No. (inc. dialing code)

Company Registration No.

Email

4. Duration of Project

Start date 2025

Expected completion date 2075

5. Description and Cost of the Proposed Project

(a) Estimated gross cost of the works proposed seawards of the tidal limit of MHWS

£10.7 Billion (excluding VAT and OPEX).

(b) Give a detailed description of the proposed schedule of work.

Please see Additional Information (attached) for further detail and the indicative construction programme contained within Volume 1 Chapter 3 - Project Description of the Berwick Bank Wind Farm Project Environmental Impact Assessment (EIA) Report.

(c) Types of Work Proposed

General Marine Project (e.g. wave, tidal device, monopile turbine)

Offshore wind farm including wind turbines, foundations, inter array cables, scour and cable protection.

Scientific/Marine Survey (e.g. geotechnical, geophysical, waverider):

Pre-construction Geophysical and Geotechnical Surveys and metocean and meteorological equipment.

Moorings (e.g. private, commercial):

Moorings potentially in support of construction activity.

Dredging/Drilling Operations

There is a requirement for seabed preparation / drilling foundations; refer to EIAR Chapter 3.

6. Location of Project (including any temporary deposit locations)

This should include either National Grid References (NGR) or Latitude and Longitude co-ordinates defining the extent of the project.

Please see attached offshore infrastructure location plan and list of coordinates.

7. Method Statement

Berwick Bank Wind Farm will comprise up to 307 turbines, associated foundations and substructures, subsea array cables and scour protection and cable protection where appropriate.

Please refer to the EIA Report Volume 1 Chapter 3 Project Description Chapter for further detail on the description of the Proposed Development and construction methods.

8. Permanent (and Temporary) Deposits

(a) Quantity of permanent (and temporary, where applicable) materials to be deposited below MHWS:

Type of Deposit	Nature of Deposit (P = Permanent, T = Temporary)	Deposit Quantity
Steel/Iron	P	See attachment Tonnes No. (if applicable)
Timber	P	See attachment m ³ /tonnes
Plastic/Synthetic	P	See attachment m ²
Concrete	P	See attachment m ³
Silt	P	See attachment m ³
Sand	P	See attachment m ³
Stone/Rock/Gravel	P	See attachment Size range (mm) Total m ³
Concrete bags/mattresses	P	See attachment No. Dimensions Total m ³
Cable	P	See attachment length (m)

Other (please describe below):

See attachment

(b) Method of delivery of material.
(see Guidance Notes)

By vessel. Please refer to Volume 1 - Chapter 3 - Project Description of the Berwick Bank EIA Report.

If necessary, please continue on a separate sheet and tick this box

IF THE PROJECT INVOLVES DREDGING/DRILLING (AND DISPOSAL OF DREDGED MATERIALS AT SEA) THEN PLEASE COMPLETE THE FOLLOWING SECTIONS, OTHERWISE PROCEED TO SECTION 22

9. Dredging/Drilling Contractor/Producer Details

Title Initials Surname
Trading Title (if appropriate)
Address

Name of contact
(if different)
Position within Company
(if appropriate)
Telephone No. Fax No.
(inc. dialing code) (inc. dialing code)
Company Registration No. Email

10. Holder

If the Holder is also the Applicant (shown at 2) tick the box and go to section 11
If the Holder is also the Producer (shown at 9) of the material tick the box and go to section 11

Title Initials Surname
Trading Title (if appropriate)
Address

Name of contact
(if different)
Position within Company
(if appropriate)
Telephone No. Fax No.
(inc. dialing code) (inc. dialing code)
Company Registration No. Email

11. Agent

Title Initials Surname
Trading Title (if appropriate)
Address

Name of contact
(if different)

Position within Company
(if appropriate)

Telephone No.
(inc. dialing code)

Fax No.
(inc. dialing code)

Company Registration No.

Email

If more than one 'Agent' please continue on a separate sheet and tick the box

12. Duration of Dredging/Drilling Operation

When is it proposed to begin the dredging/drilling operation?

When are dredging/drilling and disposal operations expected to be completed?

13. Details of Dredging/Drilling and Disposal Vessel(s)

	Name of Vessel and Operator	Type of Vessel
(a)		
(b)		
(c)		
(d)		

14. Method Statement for Dredging/Drilling Operation

15. Use of Explosives

Will any part of the dredging operation involve the use of explosives?

YES NO

If YES,

Has a method statement regarding the use of explosives been submitted with this application?

YES NO

If a method statement is not being submitted, please provide an explanation as to why.

Please see EIA application for full details available.

16. Details of Areas to be Dredged/Drilled

Dredge/Drill Areas	Name of Area to be Dredged/Drilled	Co-ordinates	Nature of Dredged/Drilled Area
A			
B			
C			
D			
E			

If necessary please continue on a separate sheet and tick this box

17. Details of Material to be Dredged/Drilled

For each of the areas at rows A –E above (plus any listed separately), provide the following information:

Dredge/Drill Areas	Estimated Specific Gravity	Physical Composition of Material	Depth of Material to be Removed (metres)	Quantity to be Dredged/Drilled per Year (either in-situ m³ or metric tonnes)
A				
B				
C				
D				
E				

If necessary please continue on a separate sheet and tick this box

18. Dredged/Drilled Material: Additional Information

For each of the areas at rows A – E above (plus any listed separately), provide the following information:

Dredge/Drill Areas	Type of Contamination	Type of Dredger	Beneficial Uses
A			
B			
C			
D			
E			

If necessary please continue on a separate sheet and tick this box

19. Details of Dredged Material Quality

Has the dredged/drilled material been chemically analysed in the last 3 years? YES NO

Can the samples be made available if required? YES NO

If **NO**, when will they be available?

20. Best Practicable Environmental Option (BPEO) Assessment

Has an up to date BPEO assessment been included with your application? YES NO

21. Sea Disposal Site Details

Name of Disposal Site (or Oslo Code)	Co-ordinates of Disposal Site

22. Other Consents

Provide details below of all consents you have applied for or received.

Type of Consent	(Tick appropriate box)		Reference No.	Date of Issue of Consent
	Applied for	Not Applied for		
1. Local Planning Authority (LPA) (e.g. Town and Country Planning Act) Name and address of LPA for Location of proposed works:		✓		
		A TCPA application for the onshore transmission infrastructure works landward of the MLWS tidal limit has been submitted to East Lothian Council (December 2022).		
2. Land Owner e.g. The Crown Estate	✓		Agreement for Lease	Awaiting
3. Local Port or Harbour Authority e.g. local work licence		✓		
4. Scottish Environment Protection Agency (SEPA)		✓		
5. Others		✓		

23. Statutory Consenting Powers

Do you, or (if appropriate) your client, have statutory powers to consent any aspect of this project?

No

24. Advertising and Consultation

Have these proposals been advertised to the public?

YES NO

If **YES**, how and where?

Public notices will be placed in the following publications for two consecutive weeks: East Lothian Courier, The Herald, The Courier, Edinburgh Gazette, Fishing News and Lloyds List.

Have the public been invited to submit comments?

YES NO

If **YES**, to whom and by what closing date?

The adverts will advise the public that they have [42 days from the date agreed with MSLOT following validation of the application] to submit comments in accordance with The Marine Works (Environmental Impact Assessment) Regulations 2007 (as amended) and The Marine Works (Environmental Impact Assessment) (Scotland) Regulations 2017, the Electricity Works (Environmental Impact Assessment) (Scotland) Regulations 2017 and the Electricity (Applications for Consent) Regulations 1990.

Have any consultation meetings with the public been arranged?

YES NO

If **YES**, where and when are these to be held?

Two rounds of public consultation and events (virtual and in-person) were undertaken to support the Project, please refer to the PAC Report and Chapter 5 Stakeholder Engagement Chapter.

25. Consultation with Conservation Bodies

Provide details of any consultation with Conservations Bodies, and, if appropriate, include copies of any correspondence with your application.

Roadmap and working group meetings were attended by the Project team, please refer to the Stakeholder Engagement Chapter and respective road map meeting appendices.

26. Designated Conservation Areas

Are any parts of the proposed project located within the boundaries of a designated conservation area?

If yes, indicate approximate distance of the project from the boundary of the nearest conservation area(s)

Yes, within MPA

If appropriate, are any parts of the proposed dredging and/or deposit operations located within the boundaries of a designated conservation area?

If yes, indicate approximate distance of the operations from the boundary of the nearest conservation area(s)

N/A

27. Environmental Assessment

Has an Environmental Impact Assessment (EIA)/Environmental Statement (ES) been undertaken to support any application in respect of the project, your own statutory powers (if applicable) or any other reason?

YES NO

If **YES**, is a copy of the EIA/ES included with this application?

YES NO

If the EIA/ES has been undertaken but has not been included with this application, please provide an

explanation below.

Is the EIA/ES available for public inspection?

YES NO

If **YES**, at what locations:

Yes. See attached Supporting Information. East Lothian Council Headquarters, Dundee City Council, Scottish Borders Council Headquarters, Angus Council, Fife Council and Dunbar Library - electronic copy only.

Declaration

I declare to the best of my knowledge and belief that the information given in this form and related papers is true.

WARNING

It is an offence under the Act under which this application is made to fail to disclose information or to provide false or misleading information.

Signature



Date

09/12/2022

Name in BLOCK LETTERS

Alex Meredith

Position within company
(if appropriate)

Berwick Bank Project Director

Please check carefully the information you have given and that all the enclosures (including copies) have been included.

Application Check List

1. Electronic Application

- Completed application form **x 1**
- Project drawings **x 1**
- Method Statement **x 1**
- Maps/Charts **x 1**
- Additional environmental information, eg. Photographs, Environmental Impact Assessment etc (if required) **x 1**
- Payment (signed cheque or BACS details)

✓
✓
✓
✓
✓
✓

2. Non-electronic Application

- Completed, signed application form **x 7**
- Project drawings **x 7**
- Method Statement **x 7**
- Maps/Charts **x 7**
- Additional information, eg. photographs, Environmental Impact Assessment etc (if required) **x 7 (dependent on size and relevance to consultees)**
- Payment (signed cheque or BACS details)

Berwick Bank Wind Farm Generating Station Marine Licence Application Supporting Information

The offshore components of the Berwick Bank Wind Farm (the Project) located seaward of Mean High Water Spring (MHWS) are referred to as the 'Proposed Development' and include the offshore wind farm (Generating Station) (the wind turbines, their foundations and associated inter-array cabling), together with associated transmission infrastructure including Offshore Substation Platforms (OSPs)/Offshore converter station platforms, their foundations, interconnector cables, offshore export cables and cable protection. The onshore components of the Project include landfall infrastructure (trenchless technology), onshore cables, onshore substation/converter station and connection (onshore cables) to the Scottish Power Energy Networks (SPEN) 400 kV Grid Substation located at Branxton, East Lothian. The onshore components are subject to a separate application for planning permission from East Lothian Council (ELC).

Response to Question 5 (b) Give a detailed description of the proposed schedule of work.

Schedule of works based on information presented in the EIA Report - Volume 1 Chapter 3 Project Description

A high-level indicative outline of the programme for construction of the Proposed Development is provided below. Further detail on specific timeframes, durations and sequencing of activities is provided in the maximum design scenario tables that are included in each of the EIA Report technical chapters.

Indicative outline construction programme is provided below:

- commencement of offshore construction (site preparation and landfall activities) expected Q1 2025; and
- completion of construction (including snagging) expected Q1 2033.

Due to the nature of the construction activities and scale of the Project, most of the activities identified below which are expected to commence in the first consecutive 12 months are also expected to continue beyond 12 months in duration. The construction activities that could commence in the first 12 months are listed below on an indicative basis only and are dependent on a number of factors including component and vessel availability, weather and finalised construction programme.

- site preparation works
- landfall installation
- OSPs/Offshore converter station platforms installation
- offshore export cables installation.

The following activities are expected to commence after the first 12 months.

Commencement of these construction activities is typically expected to occur sequentially, following the commencement of the construction activities listed above. However, there are expected to be periods where certain construction activities occur concurrently due to overall durations of the construction activities:

- wind turbine substructure installation

- Inter-array cables installation
- offshore export cables installation
- wind turbine installation
- completion and snagging

Response to Question 8 Permanent (and Temporary) Deposits

Question 8 (a): Complete the appropriate box(es) to indicate all materials to be deposited below MHWS. If you propose using types of materials for which a specific box is not provided, please describe the nature of such material in the box marked “Other”.

Permanent (and temporary) deposits required for the Berwick Bank generating station are presented in the table below on an indicative, maximum design scenario basis.

Type of Deposit	Nature of Deposit (P = Permanent, T = Temporary)	Deposit Quantity
Steel / Iron	p	3,770,000 tonnes
Timber	n/a	n/a
Plastic / Synthetic	p	30,000 tonnes
Concrete	p	5,200,000 m3
Silt	n/a	n/a
Sand	p	n/a
Stone / Rock / Gravel	p	12,220,786 m3
Concrete bags / Mattresses	p	7,717,500 m3
Cable	p	1,225 km

Question 8 (b) If any materials to be placed below MHWS are to be brought to the site by sea, give details of the material (e.g. clean rock, average particle size) and the vessels to be used.

All of the above materials to be placed below MHWS are to be brought to site by sea. Please see EIA Report Volume 1, Chapter 3 Project Description, which sets out the maximum numbers and types of vessels that will be required during construction and operation of the Project.

Details of vessel routes will be provided in a Navigational Safety and Vessel Management Plan (NSVMP) to be prepared post consent for approval prior to the commencement of construction.

Where temporary deposits are required, these will be located within the Proposed Development array area (please see Figure 1 and attached coordinates for this site provided at the end of this document).

Response to Question 24 Advertising and Consultation

Questions 24 (a) Have the proposals been advertised to the public? If YES, how and where?

Yes, the proposals have been advertised to the public and the application will be advertised to the public following submission.

Extensive public consultation has been undertaken during the pre-Application phase. Details about these public exhibitions are set out in chapters 5 to 8 of the PAC Report (SSER, 2022d). Materials used at these events were also made accessible on the Project website – www.berwickbank.com. These public exhibitions/engagement events included:

- a virtual public exhibition to introduce the Project to the public was held in November 2020;
- a Community Roadshow was undertaken in October 2021;
- a second public exhibition in December 2021; and
- an additional public exhibition was held in March 2022.

In terms of advertising the application to the public, following submission of the application and on dates to be agreed with Marine Scotland’s Licensing Operations Team, public notices advising that the Applicant has submitted applications for a Section 36 Consent and accompanying Marine Licences to Marine Scotland, and inviting the public to submit comments on the application, will be placed in the following publications:

- East Lothian Courier
- The Herald
- The Courier
- Edinburgh Gazette
- Fishing News
- Lloyds list

Question 24 (b) Have the public been invited to submit comments?
If Yes, to whom and by what closing date?

Yes, the public have been invited to submit comments on the proposals and will be invited to submit comments on the Application.

During the pre-application consultation events, the public were invited to submit comments in person during the events and by completing feedback forms made available at the events. Details of the project website were also made available at the event for people to submit comments online.

In terms of inviting the public to submit comments on the application, the public adverts to be published following submission of the application will advise the public how to respond to the consultation, in accordance with The Marine Works (Environmental Impact Assessment) Regulations 2007 (as amended) and The Marine Works (Environmental Impact Assessment) (Scotland) Regulations 2017, the Electricity Works (Environmental Impact Assessment) (Scotland) Regulations 2017 and the Electricity (Applications for Consent) Regulations 1990.

Hard copies of the application documents will be made available for the public to view in the following locations:

Location	Address	Opening Hours
East Lothian Council Headquarters	John Muir House Brewery Park Haddington EH41 3HA	Open Monday to Thursday 9am - 5pm Friday 9am - 4pm

Location	Address	Opening Hours
Dundee City Council	Dundee House 50 North Lindsay Street Dundee DD1 1QE	Open Monday, Tuesday, Thursday and Friday 8.30am - 5pm Wednesday 9.30am - 5pm
Scottish Borders Council Council Headquarters	Newtown St. Boswells Melrose TD6 0SA	Monday to Thursday: 8am- 5pm Friday 8am - 4pm Saturday 9am - 12noon
Angus Council	Orchardbank Business Park Orchardbank Forfar Angus DD8 1AN	Monday to Friday: 8am-5pm
Fife Council	Methil Customer Service Centre and Library Wellesley Road, Methil, Fife KY8 3PA	Monday, Tuesday, Thursday & Friday 9-12 and 1-5. Wednesday 10-12 and 1-5.

In addition to the hard copies available to view at the locations above, an electronic copy of the application will also be made available at the following location:

Location	Address	Opening Hours
Dunbar Library	Bleachingfield Community Centre Dunbar EH42 1DX	Monday, Tuesday and Friday 9 am to 1 pm, 2 pm to 5 pm Wednesday 10 am to 1 pm, 2 pm to 5 pm Thursday 9 am to 1 pm, 2 pm to 7 pm

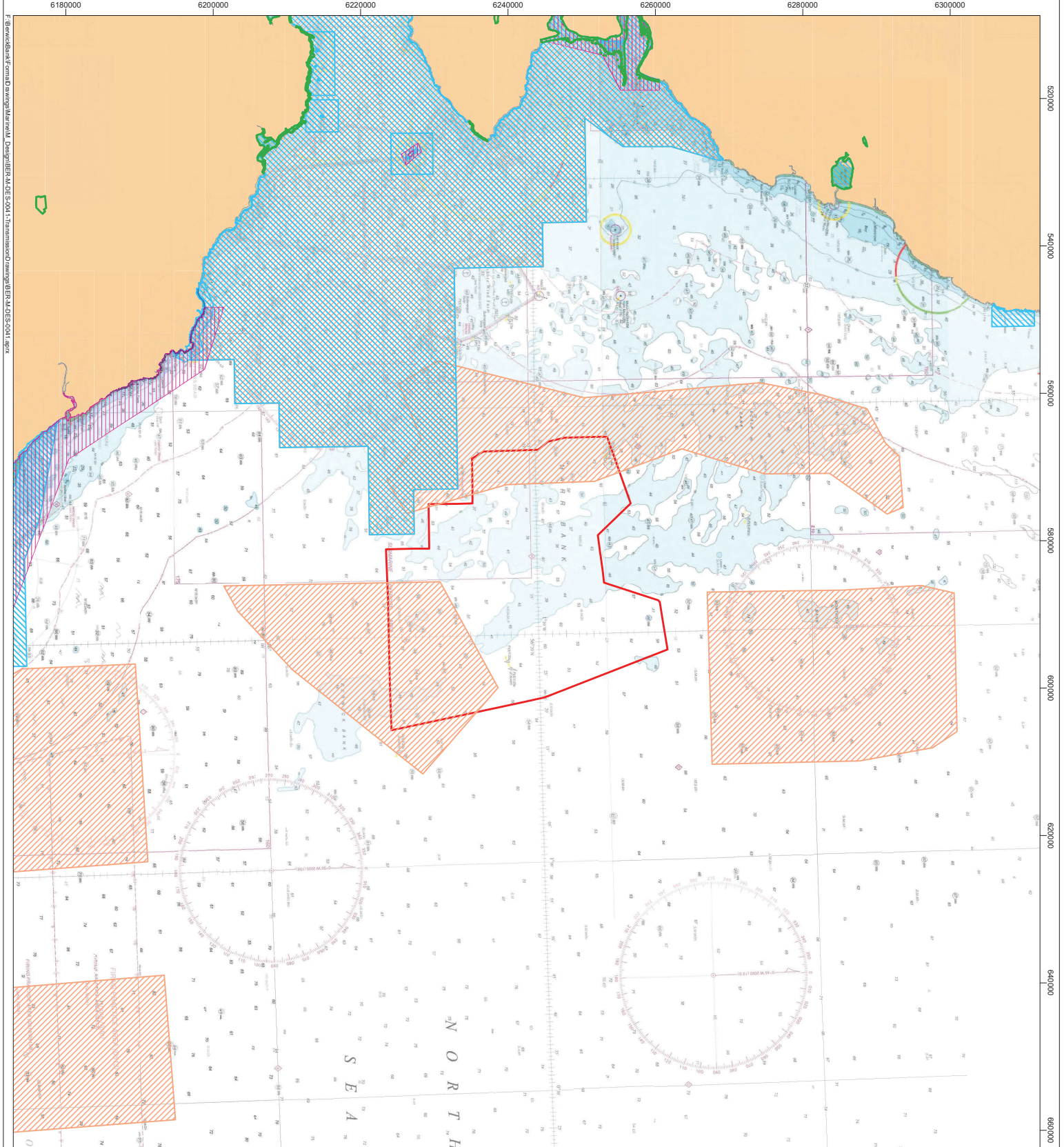
Question 24 (c) Have any consultation meetings with the public been arranged?

If Yes, where and when are these to be held?

Yes, public consultation meetings have been held (please see the PAC Report for further details) and further events are proposed to be held in future following submission of the Application.

During the pre-application Phase the Project held 13 virtual events (in accordance with Coronavirus measures in place at the relevant times), 17 in-person events including a community roadshow and two public exhibitions. In summary, 77 days of consultation over four phases has been carried out, 33,496 mail drops have been sent out, and 30 events have been run, with 1,820 attendees. For further detail please see the PAC Report.

The Applicant will be arranging public consultation meeting with the public in early 2023.



- Legend**
- Berwick Bank Generating Station Application Boundary
 - Ramsar Site
 - Special Area of Conservation with Marine Components
 - Special Protection Area with Marine Components
 - Site of Special Scientific Interest with Marine Components
 - Marine Protected Area

© Crown copyright 2022. All rights reserved. EBN01142/2020
 This is a reproduction of a map published by the Ordnance Survey under licence. For more information on map data and copyright, please visit www.ordnancesurvey.co.uk.
 This map is a reproduction of a map published by the Ordnance Survey under licence. For more information on map data and copyright, please visit www.ordnancesurvey.co.uk.
 This map is a reproduction of a map published by the Ordnance Survey under licence. For more information on map data and copyright, please visit www.ordnancesurvey.co.uk.

Rev	Date	Status	Drawn	Checked	Approved
01	01/12/2022	FOR INFORMATION	RSB	KM	

SSE Renewables

Berwick Bank Wind Farm

BERWICK BANK WIND FARM

OFFSHORE GENERATING STATION MARINE LICENCE APPLICATION BOUNDARY

Title: _____

Project: _____

Scale: 1:500,000

Plot Size: A3

Drawing Number: LF00010811-DEV-MAP-198

Sheet No.: 001 OF 001

Projection: UTM43N

WGS84

0 2.5 5 10 20 km

0 2.5 5 10 20 km

Berwick Bank Wind Farm Generating Station Marine Licence Area Coordinates

Marker	E_WGSUTM30	N_WGSUTM30	Lat_DD	Long_DD	Lat_DM	Long_DM
1	581163.8457	6223440.904	56.149083	-1.69355	56° 8.945' N	1° 41.613' W
2	581088.7232	6229287.628	56.201613	-1.692975	56° 12.097' N	1° 41.579' W
3	575048.5654	6229202.936	56.201843	-1.790332	56° 12.111' N	1° 47.420' W
4	574967.7564	6235169.83	56.255454	-1.789946	56° 15.327' N	1° 47.397' W
5	568866.236	6235105.567	56.2558	-1.888425	56° 15.348' N	1° 53.306' W
6	567903.3961	6236660.293	56.269905	-1.903564	56° 16.194' N	1° 54.214' W
7	567685.0576	6244070.291	56.336499	-1.905187	56° 20.190' N	1° 54.311' W
8	566561.0892	6245414.235	56.348731	-1.923023	56° 20.924' N	1° 55.381' W
9	566048.7526	6247596.379	56.368404	-1.930763	56° 22.104' N	1° 55.846' W
10	565895.6177	6253439.544	56.420914	-1.931773	56° 25.255' N	1° 55.906' W
11	574964.5996	6256641.703	56.448324	-1.783874	56° 26.899' N	1° 47.032' W
12	579255.2306	6252185.389	56.407596	-1.715637	56° 24.456' N	1° 42.938' W
13	585698.0213	6253036.799	56.414118	-1.610984	56° 24.847' N	1° 36.659' W
14	588080.1893	6260395.938	56.479776	-1.569906	56° 28.787' N	1° 34.194' W
15	588339.8147	6260597.438	56.481537	-1.565624	56° 28.892' N	1° 33.937' W
16	594774.4943	6261634.607	56.489602	-1.460808	56° 29.376' N	1° 27.648' W
17	601286.7318	6244949.108	56.3384	-1.361547	56° 20.304' N	1° 21.693' W
18	605724.8197	6224184.435	56.150951	-1.298084	56° 9.057' N	1° 17.885' W

Marine Renewable Energy Projects in the Territorial Sea and UK Controlled Waters Adjacent to Scotland

Marine (Scotland) Act 2010

IMPORTANT: Before completing this form, please read these notes carefully.

The following numbered paragraphs correspond to the questions on the application form and are intended to assist applicants in completing the form. These explanatory notes are specific to this application and so applicants are advised to read these in conjunction with the General Guidance document. If further clarification is needed please contact Marine Scotland Licensing Operations Team (MS-LOT) on 01224 295579 or email:

MS.MarineLicensing@scotland.gsi.gov.uk

Please refer to the General Guidance for information regarding payment methods.

Explanatory Notes

2. Applicant

The person, company or organisation making the application that will be named as the licensee on any licence issued.

3. Agent

Any person, company or organisation acting under contract (or other agreement) on behalf of any party listed in the answer to question 2, and having responsibility for the control, management or physical deposit of materials anywhere below the tidal limit of the mean high water springs (MHWS) (e.g. a consultancy company submitting the application or a contractor who will be carrying out the works.)

4. Duration of Project

Provide details of the proposed commencement and completion dates of the project. The start date will not normally be backdated, except in exceptional circumstances, since to commence a project for which a licence has not been obtained may constitute an offence resulting in appropriate legal action. A licence is normally valid for 1 calendar year or the duration of the project (whichever is longer). After this period, it may be necessary for licence holders to re-apply for a further licence to continue any ongoing work (i.e. the project will be reviewed to establish whether original details are being adhered to). Although Marine Scotland Licensing Operations Team (MS-LOT) will aim to write to licence holders one month before the expiry date of a licence, it is the licensee's responsibility to apply for any further licences or an extension prior to the expiry of the initial licence.

5. Description and Cost of the Proposed Project

- (a) This estimate should only cover work taking place below the tidal level of MHWS and should take into consideration the cost of materials, labour fees etc.
- (b) Where the project is expected to take longer than 12 consecutive months, this description must detail which elements are to be undertaken in the first 12 months, with an outline of the schedule for each further 12 month period (the method of work should be described in the answer to question 7). In the event that MS-LOT must undertake a wider consultation on your application this description may be used as a basis for informing other bodies as to the nature of the proposed work.
- (c) Best describe the type of work proposed. Where the project involves a number of elements, please complete all appropriate boxes.

6. Location of Project

Include a list of the National Grid References (NGR) or latitude and longitude co-ordinates of the boundary points of the proposed project. In some cases, (e.g. the laying of cables) it may only be practicable to supply NGR or latitude and longitude co-ordinates for the start and end points.

NGR: Should consist of two letters followed by 10 digits (e.g. TL6320031700) where the first 5 digits are the eastings (read from the south west corner of an Ordnance Survey map) and the last 5 digits are northings.

Latitude & longitude: For positions read from charts of 1:25,000 scale or smaller, the format should be, e.g. 55°55.55'N 222.22'W. The decimal point specifies that decimals of minutes are used and the datum is stated explicitly. If seconds are used then the datum should be explicitly marked, e.g. 55°55'44"N 2°22'11"W. For positions read from larger scale charts, e.g. 1:10,000, three decimal places of minutes should be used, e.g. 55°55.444'N 2°22.222'W.

It is important that the correct positions are included with this application, as any errors may result in the application being refused or delayed.

To supplement the information given in section 6, the following must be provided with the completed application form:

- a suitably scaled extract of an Ordnance Survey Map (1:2,500 scale but not more than 1:10,000) or Admiralty Chart which should be marked to indicate:
 - the full extent of the project in relation to the surrounding area;
 - either NGR or latitude and longitude co-ordinates defining the area of operation.
 - the level of MHWS;
 - any adjacent Special Area of Conservation (SAC), Special Protection Area (SPA), Site of Special Scientific Interest (SSSI), Ramsar or similar conservation area boundary.

These drawings/plans may be copied to others as part of the MS-LOT consultation process. If they are subject to copyright, **it is the responsibility of the applicant to obtain necessary approvals to reproduce the documents and to submit suitably annotated copies with the application.**

7. Method Statement

Please provide a full method statement, including details of any temporary structures/deposits that may be required below MHWS during the project, the ultimate fate of the structure and material used in its construction. Details of temporary structures will be included in any licence issued.

Proposed measures to ensure the marine environment is adequately safeguarded during the project should also be described, as should those taken to minimise any interference with other uses of the sea or foreshore.

8. Permanent (and Temporary) Deposits

- (a) Complete the appropriate box(es) to indicate all materials to be deposited below MHWS. If you propose using types of materials for which a specific box is not provided, please describe the nature of such material in the box marked "Other".
- (b) If any materials to be placed below MHWS are to be brought to the site by sea, give details of the material (e.g. clean rock, average particle size) the vessels to be used,

A chart should also be provided showing the proposed vessel route to the project site and details of any transshipment areas (i.e. where material may be off-loaded to smaller vessels/barges for transport inshore).

If temporary deposits are required, please provide details as with the permanent deposits above. The temporary deposit location details (NGR or Lat/Long) should be added to section 6 of the form, and the period of time the site will be used must be provided. If issuing a licence, MS-LOT will include on the document details of any area that has been approved as a temporary deposit site

9. Producer/Contractor

The person, company or organisation whose activities produce the material intended for deposit in the sea (e.g. the dredging or excavation contractor).

10. Holder

The person, company or organisation that will be in possession of the waste prior to its deposit in the sea. This will include those providing temporary storage facilities or transporting the material to the vessel for conveyance to the sea disposal site etc.

11. Agent

Any person, company or organisation acting under contract (or other agreement) on behalf of any party listed in the answer to sections 1, 9 or 10 and having responsibility for the control, management or deposit anywhere below the tidal limit of MHWS (e.g. a consultancy company submitting the application or a contractor who will be carrying out the operations).

12. Duration of Dredging/Drilling Operation

Provide details of the proposed commencement and completion dates of the operations. The start date will not normally be backdated, except in exceptional circumstances, since to commence a project for which a licence has not been obtained may constitute an offence resulting in appropriate legal action. A licence may be issued for up to 3 calendar years, although MS-LOT will aim to write to licence holders two months before the expiry date of a licence, it is the licensee's responsibility to apply for any further licences or an extension prior to the expiry of the initial licence.

13. Details of Dredging/Drilling and Disposal Vessel(s)

The name, operator and type of vessel, including the type of dredging/drilling plant (e.g. cutter-suction) should be entered. If vessel details are not available at the time of application, please indicate this on the form as these details will be required prior to licence issue.

14. Method Statement of Dredging/Drilling Operation

Provide a full method statement of the dredging/drilling operation. This should include details such as the rate of dredging/drilling, timing of the operation, order of the areas to be dredged/drilled and the precautions taken to protect both navigation and the environment.

15. Use of Explosives

Indicate whether explosives are to be used as part of the dredging operations. If yes, please indicate if a method statement has been provided with your application. If a method statement has been produced but is not available, please provide an explanation in the space provided.

16. Details of Areas to be Dredged/Drilled

This section requires data to be provided about the source area to be dredged and the type of material to be deposited.

Name of Area - An annotated chart/location plan (either at A3 or A4 format) of suitable scale (1:2,500 but no more than 1:10,000) should be provided, with each proposed dredge area marked and named. The chart/location plan should show the full extent of the project in relation to the surrounding area. These drawings/plans may be copied to others as part of MS-LOT consultation procedures. If they are subject to copyright, **it is the responsibility of the applicant to obtain necessary approvals to reproduce the documents and to submit suitably annotated copies with the application.**

Co-ordinates - Include a list of the National Grid References (NGR) or latitude and longitude co-ordinates of the boundary points for the proposed dredge areas.

- **NGR:** Should consist of two letters followed by 10 digits (e.g. TL6320031700) where the first 5 digits are the eastings (read from the south west corner of an Ordnance Survey map) and the last 5 digits are northings.
- **Latitude & longitude:** For positions read from charts of 1:25,000 scale or smaller, the format should be, e.g. 55°55.55'N 2°22.22'W. The decimal point specifies that decimals of minutes are used and the datum is stated explicitly. If seconds are used then the datum should be explicitly marked, e.g. 55°55'44"N 2°22'11"W. For positions read from larger scale charts, e.g. 1:10,000, three decimal

places of minutes should be used, e.g. 55°55.444'N 2°22.222'W.

Nature of Dredge/Drill Area - provide a description of the type of area to be dredged/drilled (e.g. river bed, sea, harbour, approach channel, estuary)

17. Details of Material to be Dredged/Drilled

Information is required for each of the areas listed in the answer to section 16. The applicant should indicate the following:

A pre-dredge survey and sediment chemical analysis report will be required by MS-LOT prior to the issue of a sea disposal licence. Please contact MS-LOT for details in relation to specific projects. In addition to those samples analysed by the applicant, sediment sub-samples must be submitted to MS-LOT as check monitoring may be required.

Physical Composition of Material - indicate the approximate proportions (by volume) of the different types of dredged materials which are expected to be removed from each area.

For the purposes of this application the following descriptions should be used:

Average particle size (Based on the Wentworth Table)		
Description	Lower range	Upper range
Boulders	256 mm+	
Cobbles	64 mm	256 mm
Pebbles	4mm	64 mm
Granules	2 mm	4mm
Sand	62 microns	2mm
Silt and clay		62 microns

Depth of Material to be Removed - indicate the maximum depth (in metres) below the current seabed level, to which it is expected dredging is to be carried out.

Estimated Specific Gravity - indicate the specific gravity of the material to be disposed.

Quantity to be Dredged/Drilled per Year - the amount of material to be dredged (per year) from each area. Indicate unit of measure, either in-situ cubic metres or metric tonnes.

18. Dredged/Drilled Material: Additional Information

Contamination - information should be given regarding contamination in any of the areas to be dredged/drilled e.g. waste discharges, man-made rubbish or industrial activity in close proximity.

Type of dredger - indicate the type of dredging plant to be used within each area.

Beneficial uses – include any intended beneficial use of material (details to be provided in the BPEO).

19. Details of Dredged/Drilled Material Quality

The applicant is required to have representative sediment samples analysed at a laboratory of choice. This is liable to extend the time required to consider your application **as no licence will be issued without provision of this chemistry data**. As part of the application consideration process, an assessment will be made of the

chemical and physical characteristics of the material to be deposited at sea and its potential effects upon the marine environment.

As part of the licence conditions, you may be required to take representative samples of the dredged/drilled material during the dredging/sea disposal operations for analysis by MS-LOT. In such cases, samples should be taken at specified locations and depths and placed in containers which will be provided. The samples should then be returned to MS-LOT at the Marine Laboratory Aberdeen. This process enables the UK to fulfil its obligations under international conventions.

20. Best Practicable Environmental Option (BPEO) Assessment

Under Part 4, Section 27(2) of the Marine (Scotland) Act 2010 (there is no equivalent provision under the Marine and Coastal Access Act 2009), the Licensing Authority has an obligation to consider the availability of practical alternatives when considering applications involving disposal of material at sea. In order for Marine Scotland to thoroughly assess the available alternative options and reach a properly considered decision, all sea disposal licence applications must be supported by a detailed assessment of the alternative options - a Best Practicable Environmental Option (BPEO) assessment. This should include a statement setting out the reasons which have led to the conclusion that deposit of the materials at sea is the BPEO. **Sea disposal applications will not be considered unless they are accompanied by a BPEO assessment.** All options in the BPEO should be explored fully (as per the guidance documents) otherwise your form and BPEO are liable to be returned to you thereby delaying processing of the application.

21. Sea Disposal Site Details

Provide details of the proposed sea disposal site for the dredged material and, if necessary, any alternative sea disposal site(s) considered. In determining whether to issue a licence, MS-LOT will take into account any site nominated by the applicant. However, should this site be unsuitable, the nearest suitable disposal site for the dredged material will be identified. Should you wish to establish a new site, please provide details in a covering letter with your application and MS-LOT will contact you to discuss your proposal before your application is determined. The cost of any site investigations to identify any new sea disposal site will normally be the responsibility of the applicant.

22. Other Consents

Detail all consents required for the proposed project and indicate those that you have applied for or received. In all cases the applicant must provide the name and address of the nearest Local Planning Authority for the location of the project.

23. Statutory Consenting Powers

Please describe in the answer to this question what (if any) statutory responsibilities you (or your client) have to consent any aspect of the project.

24. Advertising and Consultation

- (a) Confirm whether the proposed project has been advertised, and if so how and where?
- (b) Have the public been invited to comment on the proposed project? If so to whom and what was the closing date?
- (c) Have any consultation meetings been held with the public? If so where and when?

25. Consultation with Conservation Bodies

Consenting Authorities have a duty to ensure marine projects will not have a significant adverse environmental impact, particularly upon designated conservation areas (e.g. SSSI, SAC, SPA, Ramsar sites etc). All details of

consultations with conservation bodies (e.g. SNH, JNCC) should be given, particularly where the applicant has statutory powers for consenting aspects of the project

In addition, guidance can be obtained from www.foodstandards.gov.uk/ with regards to the Shellfish Waters Directive (2006/113/EC) which has parameters set to protect the water quality in which edible shellfish are grown.

26. Designated Conservation Areas

Indicate whether the proposed project is located within or close to the boundaries of a conservation area such as a SAC, SPA, SSSI or Ramsar site (further information can be found on the SNH SiteLink webpage <http://gateway.snh.gov.uk/>).

27. Environmental Assessment

Under the Marine Works (EIA) Regulations 2007, there may be a requirement for certain projects to undergo an Environmental Impact Assessment (EIA) and produce an Environmental Statement (ES). If an EIA/ES is deemed necessary, MS-LOT cannot issue a marine Licence until the outcome of the EIA/ES has been determined. Please indicate whether any EIA has been carried out in respect of the proposed project, either under your own powers or as required by another authority. If such an assessment has been undertaken, please indicate if a copy has been provided with your application. If the statement/assessment has been completed but is not available, please provide an explanation in the space provided.

Additionally, please also give details regarding if and where a copy has been/is being made available for public inspection.

Other Considerations

Applicants should also be aware of the need to pay due regard to coastal and marine archaeological matters and attention is drawn to Historic Scotland's Operational Policy Paper HP6, "Conserving the Underwater Heritage". Please ensure that you have:

- completed **all** applicable sections of the application form;
- signed and dated the declaration;
- provided the correct relevant documents, charts, and continuation sheets (where necessary); and
- enclosed the correct payment (together with the remittance slip) or paid by means of BACS (if appropriate).

Otherwise your application may be delayed or returned to you.

Application for Marine Renewable Energy Projects in the Territorial Sea and UK Controlled Waters Adjacent to Scotland

(ML-003)

Marine (Scotland) Act 2010

It is the responsibility of the applicant to obtain any other consents or authorisations that may be required.

Under Part 4, Section 54 of the Marine (Scotland) Act 2010 and Section 101 of the Marine and Coastal Access Act 2009 all information contained within or provided in support of this application will be placed on the Public Register. There is no national security grounds for application information not going on the Register under the 2010 Act. Under the 2009 Act, application information goes on the Register unless the Secretary of State determines that it's disclosure in the Register would be contrary to the interests of national security.

Public Register

Is there any information contained within or provided in support of this application that you consider should not be included on the Public Register on the grounds that its disclosure

- (a) would be contrary to the interests of national security; or YES NO
- (b) would adversely affect the confidentiality of commercial or industrial information where such confidentiality is provided by law to protect a legitimate commercial interest? YES NO

If **YES**, to either (a) or (b), please provide full justification as to why all or part of the information you have provided should be withheld.

1. Project Title and Payment Details

Please give a brief identifiable description, including the location, of the project.

Berwick Bank Wind Farm Offshore Transmission Infrastructure in the Inner and Outer Firth of Forth.

Payment: Enclosed payment BACS **OR** Invoice

2. Applicant Details

Title Initials Surname

Trading Title (if appropriate) Berwick Bank Wind Farm Limited

Address Inveralmond House, 200 Dunkeld Road, Perth, PH1 3AQ

Name of contact (if different) Sarah Edwards

Position within Company (if appropriate)

Telephone No. 07587 201201 (inc. dialing code)

Fax No. (inc. dialing code)

Company Registration No. SC721781

Email sarah.edwards2@sse.com

3. Agent Details (if any)

Title Initials Surname

Trading Title (if appropriate)

Address

Name of contact (if different)

Position within Company (if appropriate)

Telephone No. (inc. dialing code)

Fax No. (inc. dialing code)

Company Registration No.

Email

4. Duration of Project

Start date 2025

Expected completion date 2075

5. Description and Cost of the Proposed Project

(a) Estimated gross cost of the works proposed seawards of the tidal limit of MHWS

£1.3 Billion (excluding VAT and OPEX).

(b) Give a detailed description of the proposed schedule of work.

Please see Additional Information (attached) for further detail and the indicative construction programme contained within Volume 1 Chapter 3 - Project Description of the Berwick Bank Wind Farm Project Environmental Impact Assessment (EIA) Report.

(c) Types of Work Proposed

General Marine Project (e.g. wave, tidal device, monopile turbine)

Offshore transmission infrastructure associated with Berwick Bank Offshore Wind Farm

Scientific/Marine Survey (e.g. geotechnical, geophysical, waverider):

Pre-construction Geophysical and Geotechnical Surveys and metocean and meteorological equipment.

Moorings (e.g. private, commercial):

Moorings potentially in support of construction activity.

Dredging/Drilling Operations

There is a requirement for seabed preparation / drilling foundations; refer to EIA Report Chapter 3.

6. Location of Project (including any temporary deposit locations)

This should include either National Grid References (NGR) or Latitude and Longitude co-ordinates defining the extent of the project.

Please see attached offshore infrastructure location plan and list of coordinates.

7. Method Statement

Offshore Transmission Infrastructure (Part 1) associated with the Berwick Bank Wind Farm comprising up to eight Offshore Substation Platforms (OSPs)/converter station platforms, interconnector cables, up to eight offshore export cables and associated scour and rock protection.

Please refer to the EIA Report Volume 1 Chapter 3 Project Description Chapter for further detail on the description of the Proposed Development and construction methods.

8. Permanent (and Temporary) Deposits

(a) Quantity of permanent (and temporary, where applicable) materials to be deposited below MHWS:

Type of Deposit	Nature of Deposit (P = Permanent, T = Temporary)	Deposit Quantity
Steel/Iron	P	See attachment Tonnes No. (if applicable)
Timber	P	See attachment m ³ /tonnes
Plastic/Synthetic	P	See attachment m ²
Concrete	P	See attachment m ³
Silt	P	See attachment m ³
Sand	P	See attachment m ³
Stone/Rock/Gravel	P	See attachment Size range (mm) Total m ³
Concrete bags/mattresses	P	See attachment No. Dimensions Total m ³
Cable	P	See attachment length (m)

Other (please describe below):

See attachment and Berwick Bank Wind Farm EIA Report Volume 1 Chapter 3: Project Description

(b) Method of delivery of material.
(see Guidance Notes)

By vessel. Please refer to Volume 1 Chapter 3 - Project Description of the Berwick Bank EIA Report.

If necessary, please continue on a separate sheet and tick this box



IF THE PROJECT INVOLVES DREDGING/DRILLING (AND DISPOSAL OF DREDGED MATERIALS AT SEA) THEN PLEASE COMPLETE THE FOLLOWING SECTIONS, OTHERWISE PROCEED TO SECTION 22

Position within Company
(if appropriate)

Telephone No.
(inc. dialing code)

Fax No.
(inc. dialing code)

Company Registration No.

Email

If more than one 'Agent' please continue on a separate sheet and tick the box

12. Duration of Dredging/Drilling Operation

When is it proposed to begin the dredging/drilling operation?

When are dredging/drilling and disposal operations expected to be completed?

13. Details of Dredging/Drilling and Disposal Vessel(s)

	Name of Vessel and Operator	Type of Vessel
(a)		
(b)		
(c)		
(d)		

14. Method Statement for Dredging/Drilling Operation

N/A

15. Use of Explosives

Will any part of the dredging operation involve the use of explosives?

YES NO

If YES,

Has a method statement regarding the use of explosives been submitted with this application?

YES NO

If a method statement is not being submitted, please provide an explanation as to why.

Please see the Berwick Bank Wind Farm Offshore EIA Report for full details relating to UXO detonation.

16. Details of Areas to be Dredged/Drilled

Dredge/Drill Areas	Name of Area to be Dredged/Drilled	Co-ordinates	Nature of Dredged/Drilled Area
A			
B			
C			
D			
E			

If necessary please continue on a separate sheet and tick this box

17. Details of Material to be Dredged/Drilled

For each of the areas at rows A –E above (plus any listed separately), provide the following information:

Dredge/Drill Areas	Estimated Specific Gravity	Physical Composition of Material	Depth of Material to be Removed (metres)	Quantity to be Dredged/Drilled per Year (either in-situ m³ or metric tonnes)
A				
B				
C				
D				
E				

If necessary please continue on a separate sheet and tick this box

18. Dredged/Drilled Material: Additional Information

For each of the areas at rows A – E above (plus any listed separately), provide the following information:

Dredge/Drill Areas	Type of Contamination	Type of Dredger	Beneficial Uses
A			
B			
C			
D			
E			

If necessary please continue on a separate sheet and tick this box

19. Details of Dredged Material Quality

Has the dredged/drilled material been chemically analysed in the last 3 years? YES NO

Can the samples be made available if required? YES NO

If **NO**, when will they be available?

20. Best Practicable Environmental Option (BPEO) Assessment

Has an up to date BPEO assessment been included with your application? YES NO

21. Sea Disposal Site Details

Name of Disposal Site (or Oslo Code)	Co-ordinates of Disposal Site

22. Other Consents

Provide details below of all consents you have applied for or received.

Type of Consent	(Tick appropriate box)		Reference No.	Date of Issue of Consent
	Applied for	Not Applied for		
1. Local Planning Authority (LPA) (e.g. Town and Country Planning Act) Name and address of LPA for Location of proposed works:	✓			
		A TCPA application for the onshore transmission infrastructure works landward of the MLWS tidal limit has been submitted to East Lothian Council (December 2022)		
2. Land Owner e.g. The Crown Estate		✓	Agreement for Lease	Awaiting
3. Local Port or Harbour Authority e.g. local work licence		✓		
4. Scottish Environment Protection Agency (SEPA)		✓		
5. Others		✓		

23. Statutory Consenting Powers

Do you, or (if appropriate) your client, have statutory powers to consent any aspect of this project?

No

24. Advertising and Consultation

Have these proposals been advertised to the public?

YES NO

If **YES**, how and where?

Public notices will be placed in the following publications for two consecutive weeks: East Lothian Courier, The Herald, The Courier, Edinburgh Gazette, Fishing News and Lloyds List.

Have the public been invited to submit comments?

YES NO

If **YES**, to whom and by what closing date?

The adverts will advise the public that they have [42 days from the date agreed with MSLOT following validation of the application] to submit comments in accordance with The Marine Works (Environmental Impact Assessment) Regulations 2007 (as amended) and The Marine Works (Environmental Impact Assessment) (Scotland) Regulations 2017, the Electricity Works (Environmental Impact Assessment) (Scotland) Regulations 2017 and the Electricity (Applications for Consent) Regulations 1990.

Have any consultation meetings with the public been arranged?

YES NO

If **YES**, where and when are these to be held?

Two rounds of public consultation and events (virtual and in-person) were undertaken to support the Project, please refer to the PAC Report and Chapter 5 Stakeholder Engagement Chapter.

25. Consultation with Conservation Bodies

Provide details of any consultation with Conservations Bodies, and, if appropriate, include copies of any correspondence with your application.

Roadmap and working group meetings were attended by the Project team, please refer to the Stakeholder Engagement Chapter and respective road map meeting appendices.

26. Designated Conservation Areas

Are any parts of the proposed project located within the boundaries of a designated conservation area?

If yes, indicate approximate distance of the project from the boundary of the nearest conservation area(s)

Yes, within MPA

If appropriate, are any parts of the proposed dredging and/or deposit operations located within the boundaries of a designated conservation area?

If yes, indicate approximate distance of the operations from the boundary of the nearest conservation area(s)

N/A

27. Environmental Assessment

Has an Environmental Impact Assessment (EIA)/Environmental Statement (ES) been undertaken to support any application in respect of the project, your own statutory powers (if applicable) or any other reason?

YES NO

If **YES**, is a copy of the EIA/ES included with this application?

YES NO

If the EIA/ES has been undertaken but has not been included with this application, please provide an

explanation below.

Is the EIA/ES available for public inspection?

YES NO

If **YES**, at what locations:

Yes. See attached Supporting Information. East Lothian Council Headquarters, Dundee City Council, Scottish Borders Council Headquarters, Angus Council, Fife Council and Dunbar Library - electronic copy only.


Declaration

I declare to the best of my knowledge and belief that the information given in this form and related papers is true.

WARNING

It is an offence under the Act under which this application is made to fail to disclose information or to provide false or misleading information.

Signature



Date

09/12/2022

Name in BLOCK LETTERS

Alex Meredith

Position within company
(if appropriate)

Berwick Bank Project Director

Please check carefully the information you have given and that all the enclosures (including copies) have been included.

Application Check List

1. Electronic Application

- Completed application form **x 1**
- Project drawings **x 1**
- Method Statement **x 1**
- Maps/Charts **x 1**
- Additional environmental information, eg. Photographs, Environmental Impact Assessment etc (if required) **x 1**
- Payment (signed cheque or BACS details)

✓
✓
✓
✓
✓
✓

2. Non-electronic Application

- Completed, signed application form **x 7**
- Project drawings **x 7**
- Method Statement **x 7**
- Maps/Charts **x 7**
- Additional information, eg. photographs, Environmental Impact Assessment etc (if required) **x 7 (dependent on size and relevance to consultees)**
- Payment (signed cheque or BACS details)

Berwick Bank Wind Farm Offshore Transmission Infrastructure (Part 1) Marine Licence Application Supporting Information

The offshore components of the Berwick Bank Wind Farm (the Project) located seaward of Mean High Water Spring (MHWS) are referred to as the 'Proposed Development' and include the offshore wind farm (Generating Station) (the wind turbines, their foundations and associated inter-array cabling), together with associated transmission infrastructure including Offshore Substation Platforms (OSPs)/Offshore converter station platforms, their foundations, interconnector cables, offshore export cables and cable protection. The onshore components of the Project include landfall infrastructure (trenchless technology), onshore cables, onshore substation/converter station and connection (onshore cables) to the Scottish Power Energy Networks (SPEN) 400 kV Grid Substation located at Branxton, East Lothian. The onshore components are subject to a separate application for planning permission from East Lothian Council (ELC).

Response to Question 5 (b) Give a detailed description of the proposed schedule of work.

Schedule of works based on information presented in the EIA Report - Volume 1 Chapter 3 Project Description

A high-level indicative outline of the programme for construction of the Proposed Development is provided below. Further detail on specific timeframes, durations and sequencing of activities is provided in the maximum design scenario tables that are included in each of the EIA Report technical chapters.

Indicative outline construction programme is provided below:

- commencement of offshore construction (site preparation and landfall activities) expected Q1 2025; and
- completion of construction (including snagging) expected Q1 2033.

Due to the nature of the construction activities and scale of the Project, most of the activities identified below which are expected to commence in the first consecutive 12 months are also expected to continue beyond 12 months in duration. The construction activities that could commence in the first 12 months are listed below on an indicative basis only and are dependent on a number of factors including component and vessel availability, weather and finalised construction programme.

- site preparation works
- landfall installation
- OSPs/Offshore converter station platforms installation
- offshore export cables installation.

The following activities are expected to commence after the first 12 months.

Commencement of these construction activities is typically expected to occur sequentially, following the commencement of the construction activities listed above. However, there are expected to be periods where certain construction activities occur concurrently due to overall durations of the construction activities:

- wind turbine substructure installation

- Inter-array cables installation
- offshore export cables installation
- wind turbine installation
- completion and snagging

Response to Question 8 Permanent (and Temporary) Deposits

Question 8 (a): Complete the appropriate box(es) to indicate all materials to be deposited below MHWS. If you propose using types of materials for which a specific box is not provided, please describe the nature of such material in the box marked “Other”.

Permanent (and temporary) deposits required for the Berwick Bank generating station are presented in the table below on an indicative, maximum design scenario basis.

Type of Deposit	Nature of Deposit (P = Permanent, T = Temporary)	Deposit Quantity
Steel / Iron	p	90,000 tonnes
Timber	n/a	n/a
Plastic / Synthetic	p	30,000 tonnes
Concrete	p	144,194 m ³
Silt	n/a	n/a
Sand	n/a	n/a
Stone / Rock / Gravel	p	8,695,329 m ³
Concrete bags / Mattresses	p	8,613,000 m ³
Cable	p	957 km

Question 8 (b) If any materials to be placed below MHWS are to be brought to the site by sea, give details of the material (e.g. clean rock, average particle size) and the vessels to be used.

All of the above materials to be placed below MHWS are to be brought to site by sea. Please see EIA Report Volume 1, Chapter 3 Project Description, which sets out the maximum numbers and types of vessels that will be required during construction and operation of the Project.

Details of vessel routes will be provided in a Navigational Safety and Vessel Management Plan (NSVMP) to be prepared post consent for approval prior to the commencement of construction.

Where temporary deposits are required, these will be located within the Proposed Development array area (please see Figure 1 and attached coordinates for this site provided at the end of this document).

Response to Question 24 Advertising and Consultation

Questions 24 (a) Have the proposals been advertised to the public?
If YES, how and where?

Yes, the proposals have been advertised to the public and the application will be advertised to the public following submission.

Extensive public consultation has been undertaken during the pre-Application phase. Details about these public exhibitions are set out in chapters 5 to 8 of the PAC Report (SSER, 2022d). Materials used at these events were also made accessible on the Project website – www.berwickbank.com. These public exhibitions/engagement events included:

- a virtual public exhibition to introduce the Project to the public was held in November 2020;
- a Community Roadshow was undertaken in October 2021;
- a second public exhibition in December 2021; and
- an additional public exhibition was held in March 2022.

In terms of advertising the application to the public, following submission of the application and on dates to be agreed with Marine Scotland’s Licensing Operations Team, public notices advising that the Applicant has submitted applications for a Section 36 Consent and accompanying Marine Licences to Marine Scotland, and inviting the public to submit comments on the application, will be placed in the following publications:

- East Lothian Courier
- The Herald
- The Courier
- Edinburgh Gazette
- Fishing News
- Lloyds list

Question 24 (b) Have the public been invited to submit comments?

If Yes, to whom and by what closing date?

Yes, the public have been invited to submit comments on the proposals and will be invited to submit comments on the Application.

During the pre-application consultation events, the public were invited to submit comments in person during the events and by completing feedback forms made available at the events. Details of the project website were also made available at the event for people to submit comments online.

In terms of inviting the public to submit comments on the application, the public adverts to be published following submission of the application will advise the public how to respond to the consultation, in accordance with The Marine Works (Environmental Impact Assessment) Regulations 2007 (as amended) and The Marine Works (Environmental Impact Assessment) (Scotland) Regulations 2017, the Electricity Works (Environmental Impact Assessment) (Scotland) Regulations 2017 and the Electricity (Applications for Consent) Regulations 1990.

Hard copies of the application documents will be made available for the public to view in the following locations:

Location	Address	Opening Hours
East Lothian Council Headquarters	John Muir House Brewery Park Haddington EH41 3HA	Open Monday to Thursday 9am - 5pm Friday 9am - 4pm

Location	Address	Opening Hours
Dundee City Council	Dundee House 50 North Lindsay Street Dundee DD1 1QE	Open Monday, Tuesday, Thursday and Friday 8.30am - 5pm Wednesday 9.30am - 5pm
Scottish Borders Council Council Headquarters	Newtown St. Boswells Melrose TD6 0SA	Monday to Thursday: 8am- 5pm Friday 8am - 4pm Saturday 9am - 12noon
Angus Council	Orchardbank Business Park Orchardbank Forfar Angus DD8 1AN	Monday to Friday: 8am-5pm
Fife Council	Methil Customer Service Centre and Library Wellesley Road, Methil, Fife KY8 3PA	Monday, Tuesday, Thursday & Friday 9-12 and 1-5. Wednesday 10-12 and 1-5.

In addition to the hard copies available to view at the locations above, an electronic copy of the application will also be made available at the following location:

Location	Address	Opening Hours
Dunbar Library	Bleachingfield Community Centre Dunbar EH42 1DX	Monday, Tuesday and Friday 9 am to 1 pm, 2 pm to 5 pm Wednesday 10 am to 1 pm, 2 pm to 5 pm Thursday 9 am to 1 pm, 2 pm to 7 pm

**Question 24 (c) Have any consultation meetings with the public been arranged?
If Yes, where and when are these to be held?**

Yes, public consultation meetings have been held (please see the PAC Report for further details) and further events are proposed to be held in future following submission of the Application.

During the pre-application Phase the Project held 13 virtual events (in accordance with Coronavirus measures in place at the relevant times), 17 in-person events including a community roadshow and two public exhibitions. In summary, 77 days of consultation over four phases has been carried out, 33,496 mail drops have been sent out, and 30 events have been run, with 1,820 attendees. For further detail please see the PAC Report.

The Applicant will be arranging public consultation meeting with the public in early 2023.

**Berwick Bank Wind Farm Offshore Transmission Infrastructure (Part 1) Marine
Licence Application Area Coordinates**

Marker	E_WGSUT M30	N_WGSUT M30	Lat (DD)	Lon (DD)	Lat (DM)	Long (DM)
1	599799.6582	6223958.05	56.150194	-1.393506	56° 9.012' N	1° 23.610' W
2	599820.9683	6222958.277	56.14121	-1.393538	56° 8.473' N	1° 23.612' W
3	588090.593	6222708.251	56.141274	-1.582333	56° 8.476' N	1° 34.940' W
4	578743.1261	6218680.821	56.106731	-1.733909	56° 6.404' N	1° 44.035' W
5	567377.0105	6217963.62	56.102026	-1.916803	56° 6.122' N	1° 55.008' W
6	566040.0488	6217875.244	56.101419	-1.938315	56° 6.085' N	1° 56.299' W
7	563730.0018	6212590	56.054253	-1.976704	56° 3.255' N	1° 58.602' W
8	560637.6358	6212590.001	56.054655	-2.026349	56° 3.279' N	2° 1.581' W
9	559612.4083	6211926.266	56.048821	-2.042956	56° 2.929' N	2° 2.577' W
10	558211.3311	6211020.397	56.040855	-2.065643	56° 2.451' N	2° 3.939' W
11	556285.9693	6208451.829	56.01801	-2.097082	56° 1.081' N	2° 5.825' W
12	551471.5854	6206760.242	56.003354	-2.174627	56° 0.201' N	2° 10.478' W
13	546782.1217	6205237.954	55.990158	-2.250082	55° 59.409' N	2° 15.005' W
14	539294.2334	6205636.895	55.994413	-2.370046	55° 59.665' N	2° 22.203' W

Marker	E_WGSUT M30	N_WGSUT M30	Lat (DD)	Lon (DD)	Lat (DM)	Long (DM)
15	536631.7283	6202975.168	55.97071	-2.41309	55° 58.243' N	2° 24.785' W
16	536164.1264	6203036.256	55.971294	-2.420573	55° 58.278' N	2° 25.234' W
17	535853.1893	6203490.638	55.9754	-2.425494	55° 58.524' N	2° 25.530' W
18	535223.7359	6203870.593	55.97886	-2.43553	55° 58.732' N	2° 26.132' W
19	536514.5524	6205395.396	55.992463	-2.414639	55° 59.548' N	2° 24.878' W
20	538195.748	6207310.877	56.009542	-2.387417	56° 0.573' N	2° 23.245' W
21	539708.1464	6207812.707	56.013928	-2.363089	56° 0.836' N	2° 21.785' W
22	547481.5468	6209918.527	56.03214	-2.238044	56° 1.928' N	2° 14.283' W
23	555983.4383	6211077.178	56.041631	-2.101386	56° 2.498' N	2° 6.083' W
24	557456.3801	6211680.498	56.046877	-2.077618	56° 2.813' N	2° 4.657' W
25	561276.2512	6216776.469	56.092183	-2.015138	56° 5.531' N	2° 0.908' W
26	562531.0698	6218659.825	56.108939	-1.994533	56° 6.536' N	1° 59.672' W
27	578506.8794	6219667.902	56.115637	-1.737417	56° 6.938' N	1° 44.245' W
28	579057.8476	6221213.952	56.129433	-1.7281	56° 7.766' N	1° 43.686' W
29	578971.0239	6227212.907	56.183333	-1.727717	56° 11.000' N	1° 43.663' W
30	576255.211	6229225.258	56.201852	-1.770881	56° 12.111' N	1° 46.253' W

Marker	E_WGSUT M30	N_WGSUT M30	Lat (DD)	Lon (DD)	Lat (DM)	Long (DM)
31	575048.5654	6229202.936	56.201843	-1.790332	56° 12.111' N	1° 47.420' W
32	574967.7564	6235169.83	56.255454	-1.789946	56° 15.327' N	1° 47.397' W
33	568866.236	6235105.567	56.2558	-1.888425	56° 15.348' N	1° 53.306' W
34	567903.3961	6236660.293	56.269905	-1.903564	56° 16.194' N	1° 54.214' W
35	567685.0576	6244070.291	56.336499	-1.905187	56° 20.190' N	1° 54.311' W
36	566561.0892	6245414.235	56.348731	-1.923023	56° 20.924' N	1° 55.381' W
37	566048.7526	6247596.379	56.368404	-1.930763	56° 22.104' N	1° 55.846' W
38	565895.6177	6253439.544	56.420914	-1.931773	56° 25.255' N	1° 55.906' W
39	574964.5996	6256641.703	56.448324	-1.783874	56° 26.899' N	1° 47.032' W
40	579255.2306	6252185.389	56.407596	-1.715637	56° 24.456' N	1° 42.938' W
41	585698.0213	6253036.799	56.414118	-1.610984	56° 24.847' N	1° 36.659' W
42	588080.1893	6260395.938	56.479776	-1.569906	56° 28.787' N	1° 34.194' W
43	588339.8147	6260597.438	56.481537	-1.565624	56° 28.892' N	1° 33.937' W
44	594774.4943	6261634.607	56.489602	-1.460808	56° 29.376' N	1° 27.648' W
45	601286.7318	6244949.108	56.3384	-1.361547	56° 20.304' N	1° 21.693' W
46	605724.8197	6224184.435	56.150951	-1.298084	56° 9.057' N	1° 17.885' W

Marine Renewable Energy Projects in the Territorial Sea and UK Controlled Waters Adjacent to Scotland

Marine (Scotland) Act 2010

IMPORTANT: Before completing this form, please read these notes carefully.

The following numbered paragraphs correspond to the questions on the application form and are intended to assist applicants in completing the form. These explanatory notes are specific to this application and so applicants are advised to read these in conjunction with the General Guidance document. If further clarification is needed please contact Marine Scotland Licensing Operations Team (MS-LOT) on 01224 295579 or email:

MS.MarineLicensing@scotland.gsi.gov.uk

Please refer to the General Guidance for information regarding payment methods.

Explanatory Notes

2. Applicant

The person, company or organisation making the application that will be named as the licensee on any licence issued.

3. Agent

Any person, company or organisation acting under contract (or other agreement) on behalf of any party listed in the answer to question 2, and having responsibility for the control, management or physical deposit of materials anywhere below the tidal limit of the mean high water springs (MHWS) (e.g. a consultancy company submitting the application or a contractor who will be carrying out the works.)

4. Duration of Project

Provide details of the proposed commencement and completion dates of the project. The start date will not normally be backdated, except in exceptional circumstances, since to commence a project for which a licence has not been obtained may constitute an offence resulting in appropriate legal action. A licence is normally valid for 1 calendar year or the duration of the project (whichever is longer). After this period, it may be necessary for licence holders to re-apply for a further licence to continue any ongoing work (i.e. the project will be reviewed to establish whether original details are being adhered to). Although Marine Scotland Licensing Operations Team (MS-LOT) will aim to write to licence holders one month before the expiry date of a licence, it is the licensee's responsibility to apply for any further licences or an extension prior to the expiry of the initial licence.

5. Description and Cost of the Proposed Project

- (a) This estimate should only cover work taking place below the tidal level of MHWS and should take into consideration the cost of materials, labour fees etc.
- (b) Where the project is expected to take longer than 12 consecutive months, this description must detail which elements are to be undertaken in the first 12 months, with an outline of the schedule for each further 12 month period (the method of work should be described in the answer to question 7). In the event that MS-LOT must undertake a wider consultation on your application this description may be used as a basis for informing other bodies as to the nature of the proposed work.
- (c) Best describe the type of work proposed. Where the project involves a number of elements, please complete all appropriate boxes.

6. Location of Project

Include a list of the National Grid References (NGR) or latitude and longitude co-ordinates of the boundary points of the proposed project. In some cases, (e.g. the laying of cables) it may only be practicable to supply NGR or latitude and longitude co-ordinates for the start and end points.

NGR: Should consist of two letters followed by 10 digits (e.g. TL6320031700) where the first 5 digits are the eastings (read from the south west corner of an Ordnance Survey map) and the last 5 digits are northings.

Latitude & longitude: For positions read from charts of 1:25,000 scale or smaller, the format should be, e.g. 55°55.55'N 222.22'W. The decimal point specifies that decimals of minutes are used and the datum is stated explicitly. If seconds are used then the datum should be explicitly marked, e.g. 55°55'44"N 2°22'11"W. For positions read from larger scale charts, e.g. 1:10,000, three decimal places of minutes should be used, e.g. 55°55.444'N 2°22.222'W.

It is important that the correct positions are included with this application, as any errors may result in the application being refused or delayed.

To supplement the information given in section 6, the following must be provided with the completed application form:

- a suitably scaled extract of an Ordnance Survey Map (1:2,500 scale but not more than 1:10,000) or Admiralty Chart which should be marked to indicate:
 - the full extent of the project in relation to the surrounding area;
 - either NGR or latitude and longitude co-ordinates defining the area of operation.
 - the level of MHWS;
 - any adjacent Special Area of Conservation (SAC), Special Protection Area (SPA), Site of Special Scientific Interest (SSSI), Ramsar or similar conservation area boundary.

These drawings/plans may be copied to others as part of the MS-LOT consultation process. If they are subject to copyright, **it is the responsibility of the applicant to obtain necessary approvals to reproduce the documents and to submit suitably annotated copies with the application.**

7. Method Statement

Please provide a full method statement, including details of any temporary structures/deposits that may be required below MHWS during the project, the ultimate fate of the structure and material used in its construction. Details of temporary structures will be included in any licence issued.

Proposed measures to ensure the marine environment is adequately safeguarded during the project should also be described, as should those taken to minimise any interference with other uses of the sea or foreshore.

8. Permanent (and Temporary) Deposits

- (a) Complete the appropriate box(es) to indicate all materials to be deposited below MHWS. If you propose using types of materials for which a specific box is not provided, please describe the nature of such material in the box marked "Other".
- (b) If any materials to be placed below MHWS are to be brought to the site by sea, give details of the material (e.g. clean rock, average particle size) the vessels to be used,

A chart should also be provided showing the proposed vessel route to the project site and details of any transshipment areas (i.e. where material may be off-loaded to smaller vessels/barges for transport inshore).

If temporary deposits are required, please provide details as with the permanent deposits above. The temporary deposit location details (NGR or Lat/Long) should be added to section 6 of the form, and the period of time the site will be used must be provided. If issuing a licence, MS-LOT will include on the document details of any area that has been approved as a temporary deposit site

9. Producer/Contractor

The person, company or organisation whose activities produce the material intended for deposit in the sea (e.g. the dredging or excavation contractor).

10. Holder

The person, company or organisation that will be in possession of the waste prior to its deposit in the sea. This will include those providing temporary storage facilities or transporting the material to the vessel for conveyance to the sea disposal site etc.

11. Agent

Any person, company or organisation acting under contract (or other agreement) on behalf of any party listed in the answer to sections 1, 9 or 10 and having responsibility for the control, management or deposit anywhere below the tidal limit of MHWS (e.g. a consultancy company submitting the application or a contractor who will be carrying out the operations).

12. Duration of Dredging/Drilling Operation

Provide details of the proposed commencement and completion dates of the operations. The start date will not normally be backdated, except in exceptional circumstances, since to commence a project for which a licence has not been obtained may constitute an offence resulting in appropriate legal action. A licence may be issued for up to 3 calendar years, although MS-LOT will aim to write to licence holders two months before the expiry date of a licence, it is the licensee's responsibility to apply for any further licences or an extension prior to the expiry of the initial licence.

13. Details of Dredging/Drilling and Disposal Vessel(s)

The name, operator and type of vessel, including the type of dredging/drilling plant (e.g. cutter-suction) should be entered. If vessel details are not available at the time of application, please indicate this on the form as these details will be required prior to licence issue.

14. Method Statement of Dredging/Drilling Operation

Provide a full method statement of the dredging/drilling operation. This should include details such as the rate of dredging/drilling, timing of the operation, order of the areas to be dredged/drilled and the precautions taken to protect both navigation and the environment.

15. Use of Explosives

Indicate whether explosives are to be used as part of the dredging operations. If yes, please indicate if a method statement has been provided with your application. If a method statement has been produced but is not available, please provide an explanation in the space provided.

16. Details of Areas to be Dredged/Drilled

This section requires data to be provided about the source area to be dredged and the type of material to be deposited.

Name of Area - An annotated chart/location plan (either at A3 or A4 format) of suitable scale (1:2,500 but no more than 1:10,000) should be provided, with each proposed dredge area marked and named. The chart/location plan should show the full extent of the project in relation to the surrounding area. These drawings/plans may be copied to others as part of MS-LOT consultation procedures. If they are subject to copyright, **it is the responsibility of the applicant to obtain necessary approvals to reproduce the documents and to submit suitably annotated copies with the application.**

Co-ordinates - Include a list of the National Grid References (NGR) or latitude and longitude co-ordinates of the boundary points for the proposed dredge areas.

- **NGR:** Should consist of two letters followed by 10 digits (e.g. TL6320031700) where the first 5 digits are the eastings (read from the south west corner of an Ordnance Survey map) and the last 5 digits are northings.
- **Latitude & longitude:** For positions read from charts of 1:25,000 scale or smaller, the format should be, e.g. 55°55.55'N 222.22'W. The decimal point specifies that decimals of minutes are used and the datum is stated explicitly. If seconds are used then the datum should be explicitly marked, e.g. 55°55'44"N 2°22'11"W. For positions read from larger scale charts, e.g. 1:10,000, three decimal

places of minutes should be used, e.g. 55°55.444'N 2°22.222'W.

Nature of Dredge/Drill Area - provide a description of the type of area to be dredged/drilled (e.g. river bed, sea, harbour, approach channel, estuary)

17. Details of Material to be Dredged/Drilled

Information is required for each of the areas listed in the answer to section 16. The applicant should indicate the following:

A pre-dredge survey and sediment chemical analysis report will be required by MS-LOT prior to the issue of a sea disposal licence. Please contact MS-LOT for details in relation to specific projects. In addition to those samples analysed by the applicant, sediment sub-samples must be submitted to MS-LOT as check monitoring may be required.

Physical Composition of Material - indicate the approximate proportions (by volume) of the different types of dredged materials which are expected to be removed from each area.

For the purposes of this application the following descriptions should be used:

Average particle size (Based on the Wentworth Table)		
Description	Lower range	Upper range
Boulders	256 mm+	
Cobbles	64 mm	256 mm
Pebbles	4mm	64 mm
Granules	2 mm	4mm
Sand	62 microns	2mm
Silt and clay		62 microns

Depth of Material to be Removed - indicate the maximum depth (in metres) below the current seabed level, to which it is expected dredging is to be carried out.

Estimated Specific Gravity - indicate the specific gravity of the material to be disposed.

Quantity to be Dredged/Drilled per Year - the amount of material to be dredged (per year) from each area. Indicate unit of measure, either in-situ cubic metres or metric tonnes.

18. Dredged/Drilled Material: Additional Information

Contamination - information should be given regarding contamination in any of the areas to be dredged/drilled e.g. waste discharges, man-made rubbish or industrial activity in close proximity.

Type of dredger - indicate the type of dredging plant to be used within each area.

Beneficial uses – include any intended beneficial use of material (details to be provided in the BPEO).

19. Details of Dredged/Drilled Material Quality

The applicant is required to have representative sediment samples analysed at a laboratory of choice. This is liable to extend the time required to consider your application **as no licence will be issued without provision of this chemistry data**. As part of the application consideration process, an assessment will be made of the

chemical and physical characteristics of the material to be deposited at sea and its potential effects upon the marine environment.

As part of the licence conditions, you may be required to take representative samples of the dredged/drilled material during the dredging/sea disposal operations for analysis by MS-LOT. In such cases, samples should be taken at specified locations and depths and placed in containers which will be provided. The samples should then be returned to MS-LOT at the Marine Laboratory Aberdeen. This process enables the UK to fulfil its obligations under international conventions.

20. Best Practicable Environmental Option (BPEO) Assessment

Under Part 4, Section 27(2) of the Marine (Scotland) Act 2010 (there is no equivalent provision under the Marine and Coastal Access Act 2009), the Licensing Authority has an obligation to consider the availability of practical alternatives when considering applications involving disposal of material at sea. In order for Marine Scotland to thoroughly assess the available alternative options and reach a properly considered decision, all sea disposal licence applications must be supported by a detailed assessment of the alternative options - a Best Practicable Environmental Option (BPEO) assessment. This should include a statement setting out the reasons which have led to the conclusion that deposit of the materials at sea is the BPEO. **Sea disposal applications will not be considered unless they are accompanied by a BPEO assessment.** All options in the BPEO should be explored fully (as per the guidance documents) otherwise your form and BPEO are liable to be returned to you thereby delaying processing of the application.

21. Sea Disposal Site Details

Provide details of the proposed sea disposal site for the dredged material and, if necessary, any alternative sea disposal site(s) considered. In determining whether to issue a licence, MS-LOT will take into account any site nominated by the applicant. However, should this site be unsuitable, the nearest suitable disposal site for the dredged material will be identified. Should you wish to establish a new site, please provide details in a covering letter with your application and MS-LOT will contact you to discuss your proposal before your application is determined. The cost of any site investigations to identify any new sea disposal site will normally be the responsibility of the applicant.

22. Other Consents

Detail all consents required for the proposed project and indicate those that you have applied for or received. In all cases the applicant must provide the name and address of the nearest Local Planning Authority for the location of the project.

23. Statutory Consenting Powers

Please describe in the answer to this question what (if any) statutory responsibilities you (or your client) have to consent any aspect of the project.

24. Advertising and Consultation

- (a) Confirm whether the proposed project has been advertised, and if so how and where?
- (b) Have the public been invited to comment on the proposed project? If so to whom and what was the closing date?
- (c) Have any consultation meetings been held with the public? If so where and when?

25. Consultation with Conservation Bodies

Consenting Authorities have a duty to ensure marine projects will not have a significant adverse environmental impact, particularly upon designated conservation areas (e.g. SSSI, SAC, SPA, Ramsar sites etc). All details of

consultations with conservation bodies (e.g. SNH, JNCC) should be given, particularly where the applicant has statutory powers for consenting aspects of the project

In addition, guidance can be obtained from www.foodstandards.gov.uk/ with regards to the Shellfish Waters Directive (2006/113/EC) which has parameters set to protect the water quality in which edible shellfish are grown.

26. Designated Conservation Areas

Indicate whether the proposed project is located within or close to the boundaries of a conservation area such as a SAC, SPA, SSSI or Ramsar site (further information can be found on the SNH SiteLink webpage <http://gateway.snh.gov.uk/>).

27. Environmental Assessment

Under the Marine Works (EIA) Regulations 2007, there may be a requirement for certain projects to undergo an Environmental Impact Assessment (EIA) and produce an Environmental Statement (ES). If an EIA/ES is deemed necessary, MS-LOT cannot issue a marine Licence until the outcome of the EIA/ES has been determined. Please indicate whether any EIA has been carried out in respect of the proposed project, either under your own powers or as required by another authority. If such an assessment has been undertaken, please indicate if a copy has been provided with your application. If the statement/assessment has been completed but is not available, please provide an explanation in the space provided.

Additionally, please also give details regarding if and where a copy has been/is being made available for public inspection.

Other Considerations

Applicants should also be aware of the need to pay due regard to coastal and marine archaeological matters and attention is drawn to Historic Scotland's Operational Policy Paper HP6, "Conserving the Underwater Heritage". Please ensure that you have:

- completed **all** applicable sections of the application form;
- signed and dated the declaration;
- provided the correct relevant documents, charts, and continuation sheets (where necessary); and
- enclosed the correct payment (together with the remittance slip) or paid by means of BACS (if appropriate).

Otherwise your application may be delayed or returned to you.

Application for Marine Renewable Energy Projects in the Territorial Sea and UK Controlled Waters Adjacent to Scotland

(ML-003)

Marine (Scotland) Act 2010

It is the responsibility of the applicant to obtain any other consents or authorisations that may be required.

Under Part 4, Section 54 of the Marine (Scotland) Act 2010 and Section 101 of the Marine and Coastal Access Act 2009 all information contained within or provided in support of this application will be placed on the Public Register. There is no national security grounds for application information not going on the Register under the 2010 Act. Under the 2009 Act, application information goes on the Register unless the Secretary of State determines that it's disclosure in the Register would be contrary to the interests of national security.

Public Register

Is there any information contained within or provided in support of this application that you consider should not be included on the Public Register on the grounds that its disclosure

- (a) would be contrary to the interests of national security; or YES NO
- (b) would adversely affect the confidentiality of commercial or industrial information where such confidentiality is provided by law to protect a legitimate commercial interest? YES NO

If **YES**, to either (a) or (b), please provide full justification as to why all or part of the information you have provided should be withheld.

1. Project Title and Payment Details

Please give a brief identifiable description, including the location, of the project.

Payment: Enclosed payment BACS **OR** Invoice

2. Applicant Details

Title Initials Surname

Trading Title (if appropriate)

Address

Name of contact
(if different)

Position within Company
(if appropriate)

Telephone No.
(inc. dialing code)

Fax No.
(inc. dialing code)

Company Registration No.

Email

3. Agent Details (if any)

Title Initials Surname

Trading Title (if appropriate)

Address

Name of contact
(if different)

Position within Company
(if appropriate)

Telephone No.
(inc. dialing code)

Fax No.
(inc. dialing code)

Company Registration No.

Email

4. Duration of Project

Start date

Expected completion date

5. Description and Cost of the Proposed Project

(a) Estimated gross cost of the works proposed seawards of the tidal limit of MHWS

(b) Give a detailed description of the proposed schedule of work.

(c) Types of Work Proposed

General Marine Project (e.g. wave, tidal device, monopile turbine)

Scientific/Marine Survey (e.g. geotechnical, geophysical, waverider):

Moorings (e.g. private, commercial):

Dredging/Drilling Operations

6. Location of Project (including any temporary deposit locations)

This should include either National Grid References (NGR) or Latitude and Longitude co-ordinates defining the extent of the project.

7. Method Statement

--

8. Permanent (and Temporary) Deposits

(a) Quantity of permanent (and temporary, where applicable) materials to be deposited below MHWS:

Type of Deposit	Nature of Deposit (P = Permanent, T = Temporary)	Deposit Quantity
Steel/Iron		Tonnes No. (if applicable)
Timber		m ³ /tonnes
Plastic/Synthetic		m ²
Concrete		m ³
Silt		m ³
Sand		m ³
Stone/Rock/Gravel		Size range (mm) Total m ³
Concrete bags/mattresses		No. Dimensions Total m ³
Cable		Length (m)

Other (please describe below):

(b) Method of delivery of material.
(see Guidance Notes)

--

If necessary, please continue on a separate sheet and tick this box

IF THE PROJECT INVOLVES DREDGING/DRILLING (AND DISPOSAL OF DREDGED MATERIALS AT SEA) THEN PLEASE COMPLETE THE FOLLOWING SECTIONS, OTHERWISE PROCEED TO SECTION 22

9. Dredging/Drilling Contractor/Producer Details

Title Initials Surname

Trading Title (if appropriate)

Address

Name of contact
(if different)

Position within Company
(if appropriate)

Telephone No.
(inc. dialing code) Fax No.
(inc. dialing code)

Company Registration No. Email

10. Holder

If the Holder is also the Applicant (shown at 2) tick the box and go to section 11

If the Holder is also the Producer (shown at 9) of the material tick the box and go to section 11

Title Initials Surname

Trading Title (if appropriate)

Address

Name of contact
(if different)

Position within Company
(if appropriate)

Telephone No.
(inc. dialing code) Fax No.
(inc. dialing code)

Company Registration No. Email

11. Agent

Title Initials Surname

Trading Title (if appropriate)

Address

Name of contact
(if different)

Position within Company
(if appropriate)

Telephone No.
(inc. dialing code)

Fax No.
(inc. dialing code)

Company Registration No.

Email

If more than one 'Agent' please continue on a separate sheet and tick the box

12. Duration of Dredging/Drilling Operation

When is it proposed to begin the dredging/drilling operation?

When are dredging/drilling and disposal operations expected to be completed?

13. Details of Dredging/Drilling and Disposal Vessel(s)

	Name of Vessel and Operator	Type of Vessel
(a)		
(b)		
(c)		
(d)		

14. Method Statement for Dredging/Drilling Operation

15. Use of Explosives

Will any part of the dredging operation involve the use of explosives?

YES NO

If YES,

Has a method statement regarding the use of explosives been submitted with this application?

YES NO

If a method statement is not being submitted, please provide an explanation as to why.

--

16. Details of Areas to be Dredged/Drilled

Dredge/Drill Areas	Name of Area to be Dredged/Drilled	Co-ordinates	Nature of Dredged/Drilled Area
A			
B			
C			
D			
E			

If necessary please continue on a separate sheet and tick this box

17. Details of Material to be Dredged/Drilled

For each of the areas at rows A –E above (plus any listed separately), provide the following information:

Dredge/Drill Areas	Estimated Specific Gravity	Physical Composition of Material	Depth of Material to be Removed (metres)	Quantity to be Dredged/Drilled per Year (either in-situ m³ or metric tonnes)
A				
B				
C				
D				
E				

If necessary please continue on a separate sheet and tick this box

18. Dredged/Drilled Material: Additional Information

For each of the areas at rows A – E above (plus any listed separately), provide the following information:

Dredge/Drill Areas	Type of Contamination	Type of Dredger	Beneficial Uses
A			
B			
C			
D			
E			

If necessary please continue on a separate sheet and tick this box

19. Details of Dredged Material Quality

Has the dredged/drilled material been chemically analysed in the last 3 years? YES NO

Can the samples be made available if required? YES NO

If **NO**, when will they be available?

20. Best Practicable Environmental Option (BPEO) Assessment

Has an up to date BPEO assessment been included with your application? YES NO

21. Sea Disposal Site Details

Name of Disposal Site (or Oslo Code)	Co-ordinates of Disposal Site

22. Other Consents

Provide details below of all consents you have applied for or received.

Type of Consent	(Tick appropriate box)		Reference No.	Date of Issue of Consent
	Applied for	Not Applied for		
1. Local Planning Authority (LPA) (e.g. Town and Country Planning Act) Name and address of LPA for Location of proposed works:				
2. Land Owner e.g. The Crown Estate				
3. Local Port or Harbour Authority e.g. local work licence				
4. Scottish Environment Protection Agency (SEPA)				
5. Others				

23. Statutory Consenting Powers

Do you, or (if appropriate) your client, have statutory powers to consent any aspect of this project?

24. Advertising and Consultation

Have these proposals been advertised to the public?

YES NO

If **YES**, how and where?

Have the public been invited to submit comments?

YES NO

If **YES**, to whom and by what closing date?

Have any consultation meetings with the public been arranged?

YES NO

If **YES**, where and when are these to be held?

25. Consultation with Conservation Bodies

Provide details of any consultation with Conservations Bodies, and, if appropriate, include copies of any correspondence with your application.

26. Designated Conservation Areas

Are any parts of the proposed project located within the boundaries of a designated conservation area?

If yes, indicate approximate distance of the project from the boundary of the nearest conservation area(s)

If appropriate, are any parts of the proposed dredging and/or deposit operations located within the boundaries of a designated conservation area?

If yes, indicate approximate distance of the operations from the boundary of the nearest conservation area(s)

27. Environmental Assessment

Has an Environmental Impact Assessment (EIA)/Environmental Statement (ES) been undertaken to support any application in respect of the project, your own statutory powers (if applicable) or any other reason?

YES NO

If **YES**, is a copy of the EIA/ES included with this application?

YES NO

If the EIA/ES has been undertaken but has not been included with this application, please provide an

explanation below.

Is the EIA/ES available for public inspection?

YES NO

If **YES**, at what locations:

Declaration

I declare to the best of my knowledge and belief that the information given in this form and related papers is true.

WARNING

It is an offence under the Act under which this application is made to fail to disclose information or to provide false or misleading information.

Signature



Date

Name in BLOCK LETTERS

Position within company
(if appropriate)

Please check carefully the information you have given and that all the enclosures (including copies) have been included.

Application Check List

1. Electronic Application

- Completed application form **x 1**
- Project drawings **x 1**
- Method Statement **x 1**
- Maps/Charts **x 1**
- Additional environmental information, eg. Photographs, Environmental Impact Assessment etc (if required) **x 1**
- Payment (signed cheque or BACS details)

2. Non-electronic Application

- Completed, signed application form **x 7**
- Project drawings **x 7**
- Method Statement **x 7**
- Maps/Charts **x 7**
- Additional information, eg. photographs, Environmental Impact Assessment etc (if required) **x 7 (dependent on size and relevance to consultees)**
- Payment (signed cheque or BACS details)

Berwick Bank Wind Farm Offshore Transmission Infrastructure (Part 2) Marine Licence Application Supporting Information

The offshore components of the Berwick Bank Wind Farm (the Project) located seaward of Mean High Water Spring (MHWS) are referred to as the 'Proposed Development' and include the offshore wind farm (Generating Station) (the wind turbines, their foundations and associated inter-array cabling), together with associated transmission infrastructure including Offshore Substation Platforms (OSPs)/Offshore converter station platforms, their foundations, interconnector cables, offshore export cables and cable protection. The onshore components of the Project include landfall infrastructure (trenchless technology), onshore cables, onshore substation/converter station and connection (onshore cables) to the Scottish Power Energy Networks (SPEN) 400 kV Grid Substation located at Branxton, East Lothian. The onshore components are subject to a separate application for planning permission from East Lothian Council (ELC).

Response to Question 5 (b) Give a detailed description of the proposed schedule of work.

Schedule of works based on information presented in the EIA Report - Volume 1 Chapter 3 Project Description

A high-level indicative outline of the programme for construction of the Proposed Development is provided below. Further detail on specific timeframes, durations and sequencing of activities is provided in the maximum design scenario tables that are included in each of the EIA Report technical chapters.

Indicative outline construction programme is provided below:

- commencement of offshore construction (site preparation and landfall activities) expected Q1 2025; and
- completion of construction (including snagging) expected Q1 2033.

Due to the nature of the construction activities and scale of the Project, most of the activities identified below which are expected to commence in the first consecutive 12 months are also expected to continue beyond 12 months in duration. The construction activities that could commence in the first 12 months are listed below on an indicative basis only and are dependent on a number of factors including component and vessel availability, weather and finalised construction programme.

- site preparation works
- landfall installation
- OSPs/Offshore converter station platforms installation
- offshore export cables installation.

The following activities are expected to commence after the first 12 months.

Commencement of these construction activities is typically expected to occur sequentially, following the commencement of the construction activities listed above. However, there are expected to be periods where certain construction activities occur concurrently due to overall durations of the construction activities:

- wind turbine substructure installation
- Inter-array cables installation
- offshore export cables installation
- wind turbine installation
- completion and snagging

Response to Question 8 Permanent (and Temporary) Deposits

Question 8 (a): Complete the appropriate box(es) to indicate all materials to be deposited below MHWS. If you propose using types of materials for which a specific box is not provided, please describe the nature of such material in the box marked “Other”.

Permanent (and temporary) deposits required for the Offshore Transmission Infrastructure (Part 2) are presented in the table below on an indicative, maximum design scenario basis.

Type of Deposit	Nature of Deposit (P = Permanent, T = Temporary)	Deposit Quantity
Steel / Iron	p	70,000 tonnes
Timber	n/a	n/a
Plastic / Synthetic	p	20,000 tonnes
Concrete	p	48,059 m3
Silt	n/a	n/a
Sand	n/a	n/a
Stone / Rock / Gravel	p	285,782 m3
Concrete bags / Mattresses	p	241,200 m3
Cable	p	30 km

Question 8 (b) If any materials to be placed below MHWS are to be brought to the site by sea, give details of the material (e.g. clean rock, average particle size) and the vessels to be used.

All of the above materials to be placed below MHWS are to be brought to site by sea. Please see EIA Report Volume 1, Chapter 3 Project Description, which sets out the maximum numbers and types of vessels that will be required during construction and operation of the Project.

Details of vessel routes will be provided in a Navigational Safety and Vessel Management Plan (NSVMP) to be prepared post consent for approval prior to the commencement of construction.

Where temporary deposits are required, these will be located within the Proposed Development array area (please see Figure 1 and attached coordinates for this site provided at the end of this document).

Response to Question 24 Advertising and Consultation

Questions 24 (a) Have the proposals been advertised to the public?
If YES, how and where?

Yes, the proposals have been advertised to the public and the application will be advertised to the public following submission.

Extensive public consultation has been undertaken during the pre-Application phase. Details about these public exhibitions are set out in chapters 5 to 8 of the PAC Report (SSER, 2022d). Materials used at these events were also made accessible on the Project website – www.berwickbank.com. These public exhibitions/engagement events included:

- a virtual public exhibition to introduce the Project to the public was held in November 2020;
- a Community Roadshow was undertaken in October 2021;
- a second public exhibition in December 2021; and
- an additional public exhibition was held in March 2022.

In terms of advertising the application to the public, following submission of the application and on dates to be agreed with Marine Scotland’s Licensing Operations Team, public notices advising that the Applicant has submitted applications for a Section 36 Consent and accompanying Marine Licences to Marine Scotland, and inviting the public to submit comments on the application, will be placed in the following publications:

- East Lothian Courier
- The Herald
- The Courier
- Edinburgh Gazette
- Fishing News
- Lloyds list

**Question 24 (b) Have the public been invited to submit comments?
If Yes, to whom and by what closing date?**

Yes, the public have been invited to submit comments on the proposals and will be invited to submit comments on the Application.

During the pre-application consultation events, the public were invited to submit comments in person during the events and by completing feedback forms made available at the events. Details of the project website were also made available at the event for people to submit comments online.

In terms of inviting the public to submit comments on the application, the public adverts to be published following submission of the application will advise the public how to respond to the consultation, in accordance with The Marine Works (Environmental Impact Assessment) Regulations 2007 (as amended) and The Marine Works (Environmental Impact Assessment) (Scotland) Regulations 2017, the Electricity Works (Environmental Impact Assessment) (Scotland) Regulations 2017 and the Electricity (Applications for Consent) Regulations 1990.

Hard copies of the application documents will be made available for the public to view in the following locations:

Location	Address	Opening Hours
East Lothian Council Headquarters	John Muir House Brewery Park Haddington EH41 3HA	Open Monday to Thursday 9am - 5pm Friday 9am - 4pm

Location	Address	Opening Hours
Dundee City Council	Dundee House 50 North Lindsay Street Dundee DD1 1QE	Open Monday, Tuesday, Thursday and Friday 8.30am - 5pm Wednesday 9.30am - 5pm
Scottish Borders Council Council Headquarters	Newtown St. Boswells Melrose TD6 0SA	Monday to Thursday: 8am- 5pm Friday 8am - 4pm Saturday 9am - 12noon
Angus Council	Orchardbank Business Park Orchardbank Forfar Angus DD8 1AN	Monday to Friday: 8am-5pm
Fife Council	Methil Customer Service Centre and Library Wellesley Road, Methil, Fife KY8 3PA	Monday, Tuesday, Thursday & Friday 9-12 and 1-5. Wednesday 10-12 and 1-5.

In addition to the hard copies available to view at the locations above, an electronic copy of the application will also be made available at the following location:

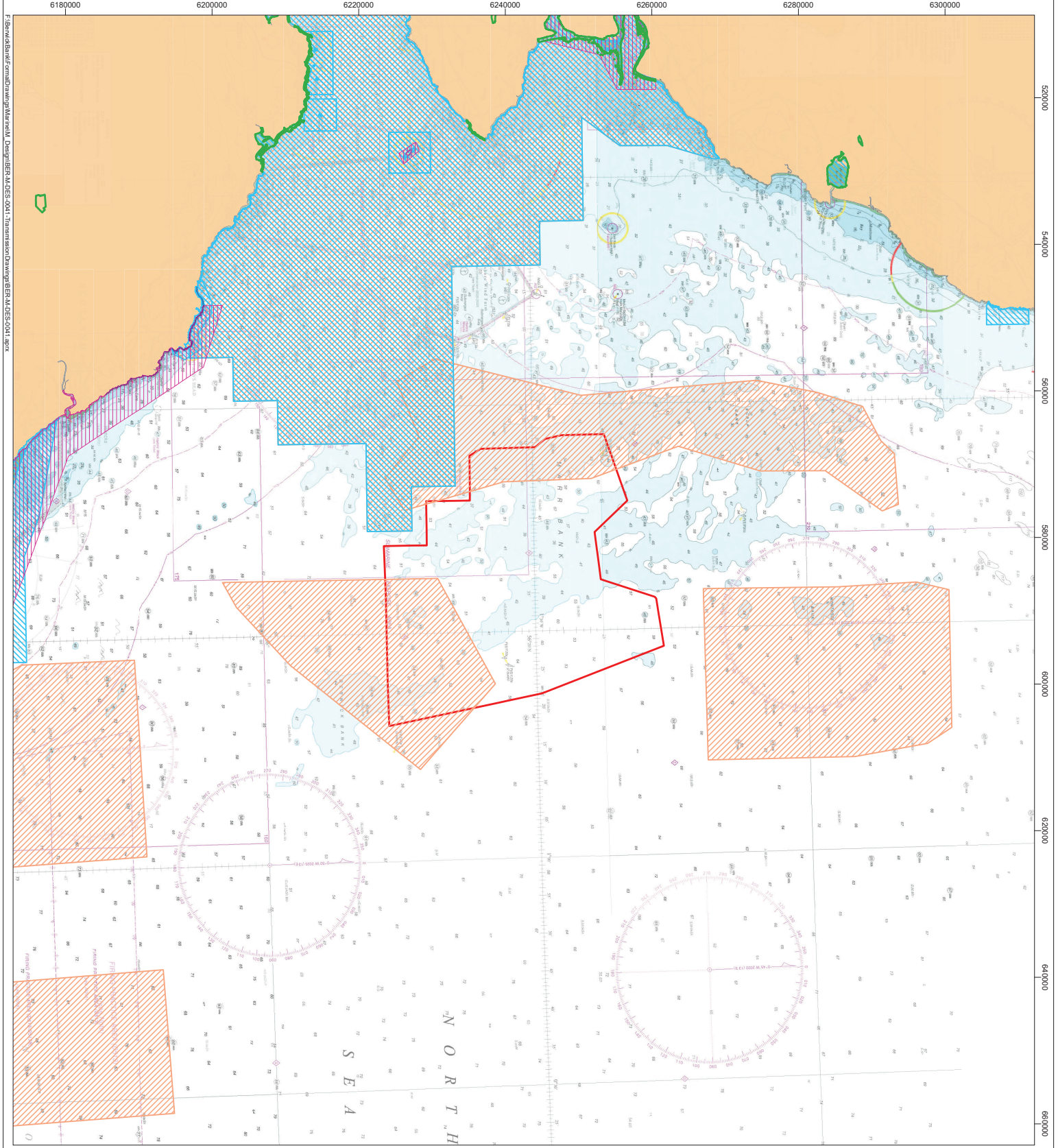
Location	Address	Opening Hours
Dunbar Library	Bleachingfield Community Centre Dunbar EH42 1DX	Monday, Tuesday and Friday 9 am to 1 pm, 2 pm to 5 pm Wednesday 10 am to 1 pm, 2 pm to 5 pm Thursday 9 am to 1 pm, 2 pm to 7 pm

**Question 24 (c) Have any consultation meetings with the public been arranged?
If Yes, where and when are these to be held?**

Yes, public consultation meetings have been held (please see the PAC Report for further details) and further events are proposed to be held in future following submission of the Application.

During the pre-application Phase the Project held 13 virtual events (in accordance with Coronavirus measures in place at the relevant times), 17 in-person events including a community roadshow and two public exhibitions. In summary, 77 days of consultation over four phases has been carried out, 33,496 mail drops have been sent out, and 30 events have been run, with 1,820 attendees. For further detail please see the PAC Report.

The Applicant will be arranging public consultation meeting with the public in early 2023.



- Legend**
- Berwick Bank Offshore Transmission Infrastructure (Part 2) Application Boundary
 - Ramsar Site
 - Special Area of Conservation with Marine Components
 - Special Protection Area with Marine Components
 - Site of Special Scientific Interest with Marine Components
 - Marine Protected Area

© Crown copyright 2022. All rights reserved. Licence: 100015425/2020. This map is for information only and does not constitute a guarantee of accuracy. The user shall be responsible for verifying the accuracy of the information shown on this map. The user shall be responsible for obtaining any necessary permissions from the appropriate authorities. The user shall be responsible for obtaining any necessary permissions from the appropriate authorities. The user shall be responsible for obtaining any necessary permissions from the appropriate authorities.

Rev	Date	By	Check	App'd
01	01/12/2022	RB	KM	

FOR INFORMATION

Rev	Date	By	Check	App'd
01	01/12/2022	RB	KM	

SSE Renewables

Berwick Bank Wind Farm

Project: BERWICK BANK WIND FARM

Title: OFFSHORE TRANSMISSION INFRASTRUCTURE (PART 2) MARINE LICENCE APPLICATION BOUNDARY

Scale: 1:500,000

Sheet No.: LTF0000108-11-DEV-MAP-200

Projection: UTM30N

0 2.5 5 10 20 km

**Berwick Bank Wind Farm Offshore Transmission Infrastructure (Part 2) Marine
Licence Application Area Coordinates**

Marker	E_WGSUTM30	N_WGSUTM30	Lat_DD	Long_DD	Lat_DM	Long_DM
1	581163.8457	6223440.904	56.149083	-1.69355	56° 8.945' N	1° 41.613' W
2	581088.7232	6229287.628	56.201613	-1.692975	56° 12.097' N	1° 41.579' W
3	575048.5654	6229202.936	56.201843	-1.790332	56° 12.111' N	1° 47.420' W
4	574967.7564	6235169.83	56.255454	-1.789946	56° 15.327' N	1° 47.397' W
5	568866.236	6235105.567	56.2558	-1.888425	56° 15.348' N	1° 53.306' W
6	567903.3961	6236660.293	56.269905	-1.903564	56° 16.194' N	1° 54.214' W
7	567685.0576	6244070.291	56.336499	-1.905187	56° 20.190' N	1° 54.311' W
8	566561.0892	6245414.235	56.348731	-1.923023	56° 20.924' N	1° 55.381' W
9	566048.7526	6247596.379	56.368404	-1.930763	56° 22.104' N	1° 55.846' W
10	565895.6177	6253439.544	56.420914	-1.931773	56° 25.255' N	1° 55.906' W
11	574964.5996	6256641.703	56.448324	-1.783874	56° 26.899' N	1° 47.032' W
12	579255.2306	6252185.389	56.407596	-1.715637	56° 24.456' N	1° 42.938' W
13	585698.0213	6253036.799	56.414118	-1.610984	56° 24.847' N	1° 36.659' W
14	588080.1893	6260395.938	56.479776	-1.569906	56° 28.787' N	1° 34.194' W
15	588339.8147	6260597.438	56.481537	-1.565624	56° 28.892' N	1° 33.937' W
16	594774.4943	6261634.607	56.489602	-1.460808	56° 29.376' N	1° 27.648' W
17	601286.7318	6244949.108	56.3384	-1.361547	56° 20.304' N	1° 21.693' W
18	605724.8197	6224184.435	56.150951	-1.298084	56° 9.057' N	1° 17.885' W